



AXELENT STOREROOM

**How secure do you
want to be?**



Nothing is as important to us as your storage needs

At Axelent Storeroom we base our products on what you need and want. We know from experience that every customer and project has its unique conditions, requirements and preferences. Therefore, our offer to you is a little different than traditional ones as it is based on different elements. The actual storeroom wall with accessories obviously constitutes the core, but it is our added value that without doubt makes us unique. We call it All inclusive by Axelent. Take a look...

All inclusive with Axelent



A responsible project manager for your project.



Instant quote and drawing.



Quick deliveries as all products are held in stock. Orders received before 2 pm are shipped the same day (applies to all standard products).



A top quality range of products and accessories throughout.



A standard range that is easy to complement.



Easily assembled products with clear instructions.



SnapperWorks. Tailored and easy-to-use drawing application available to all our customers.



X-Pack™ is a unique packaging system designed to minimise shipping damage and make receipt and installation run as smoothly as possible.



In-house fitters with specialist know-how for customers who do not wish to assemble the walls themselves.



Axelent Assistance – we guarantee quick action in the event of damage or theft.





We believe in Made in Sweden

We are located in Hillerstorp, Sweden, where product development, production, storage and packaging takes place. Besides storeroom walls, we are one of the market leaders when it comes to mesh panel systems in industry (machine guards) and stores (collapse protection). Our high standards for safety, speed and smart solutions have made us one of the market leaders in these segments. Today we are represented in no less than 54 sales offices around the world.

Effective production

Our production is highly automated to manage large volumes and rapid delivery times. As all our standard products are in stock we can ship your order the same day as we get it.

Instant quote and drawing

Our in-house drawing application SnapperWorks enables us to give you an instant quote including a drawing with material specifications.

Speedy delivery

Axelent's packaging system, X-pack™, wraps your Axelent products neatly in plastic sheeting on customised pallets complete with assembly instructions. This guarantees quick and easy

transportation, unloading, moving and assembly. We will also help you with on-site assembly if you so wish.

A secure choice

Axelent has extensive first hand knowledge of security in the industrial, storage and construction sectors. Feel free to consult us to ensure an optimum safe and secure environment surrounding our products.

Time to choose

Our four model systems cover all your needs

The type of storeroom system you choose depends on the demands you put on security and screening. We offer four different systems: F, FK, FK+ and FP.



F



FK



FK+



FP

Whatever system you select, all of our storerooms have reinforced door designs and can be fitted with mesh ceilings in cases where the ceiling height is over 3.5 metres.

High ceilings? No problem!

The current burglary prevention norms demand a maximum of 15-20 cm between the storeroom wall and ceiling. Thanks to the design of our upper sections we are able to tailor the storeroom walls to suit the space available, thereby fulfilling the building norms. We can deliver for most ceiling heights.

We believe in smart solutions. Cut and ready to install

The F, FK and FK+ systems can be cut to the required height as required. We use a U section at the top to make it easy to adapt to all types of apartment storerooms.

Flexibility makes it easier. Combine as required

The different systems can be combined when necessary.

We have designed away the problems. A complete door without a door sill

Doors are delivered complete to make fitting as smooth as possible. We also have disabled apartment storage through not using sills.

Bright and fresh with our standard colour!

All our storeroom walls and posts are painted in light grey RAL 9018. The light grey gives a fresher impression as storerooms are normally located in dark places like cellars and attics.

Quick Guide to the right storeroom

Storeroom F

Storeroom walls for normal conditions.

Storeroom FK

When you set high demands on safety and stability.

Storeroom FK+

Extra strong. Tested and approved according to SFF's standard for burglary resistant storage room fittings.

Storeroom FP

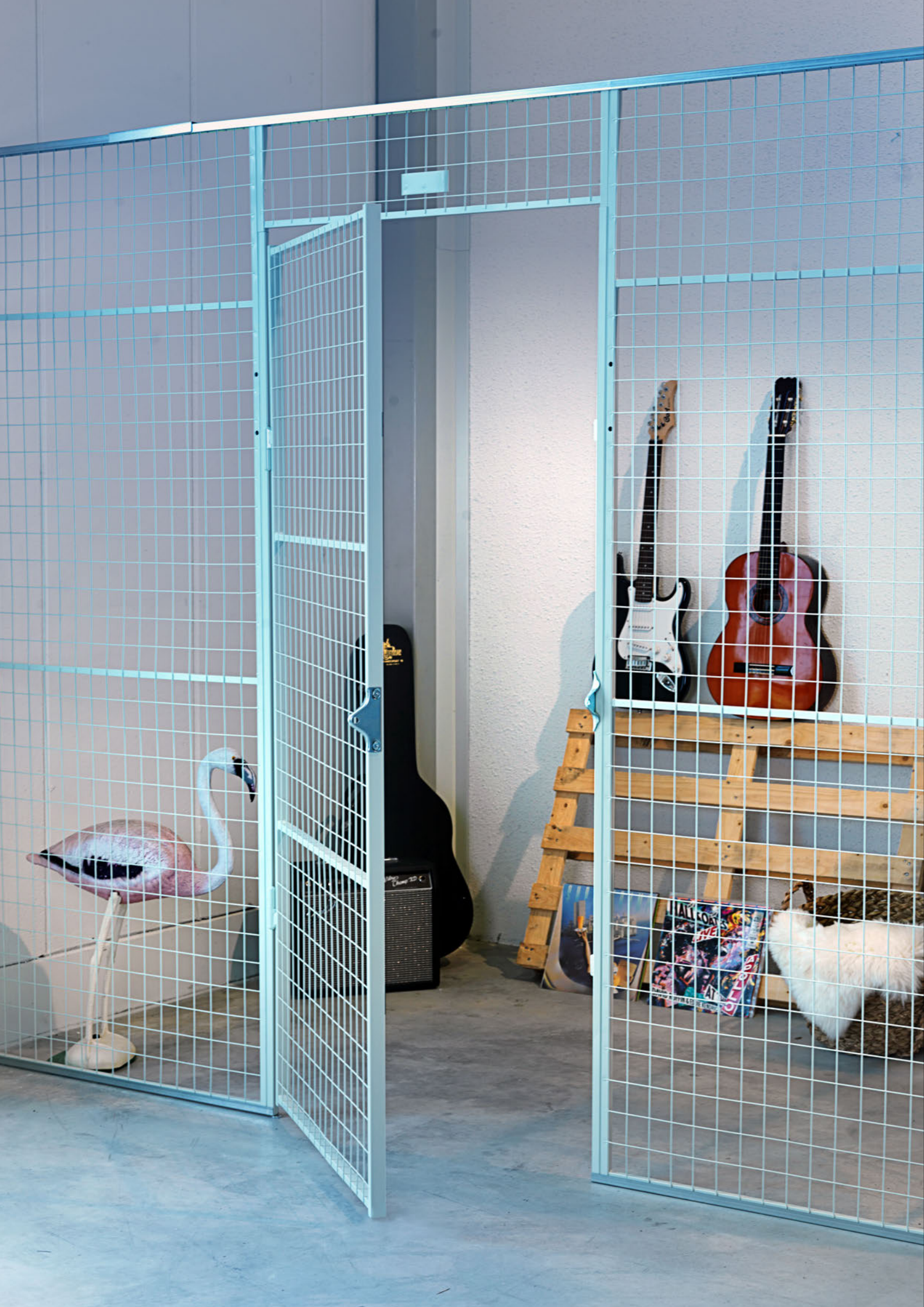
When you have high demands on security and stability with full screening.



Things to consider before you choose a storeroom.

- ✓ What does your storage space look like? A lot of angles, height variations, ventilation ducting, windows and other things to consider?
- ✓ Ceiling height. Do you need extra top sections to fulfil the burglary protection building norm of 15-20 cm to the ceiling?
- ✓ What will be kept in storage? What demands do you have on screening?
- ✓ Do you need to complement with different storeroom systems or is one sufficient?
- ✓ What are your insurance company demands?
- ✓ Who is going to fit the storeroom walls?
- ✓ Who is responsible for refitting the wall sections in the event of a break-in? How quickly?





Storeroom F

What happens backstage is really quite important

Our Axellent F storeroom system definitely belongs among our top sellers as the strength and security that this provides is often adequate enough. We have prepared for everything to run as smoothly as possible already at the design stage when the walls are on site and are to be installed.

- With extra robust tubular construction in the doors.
- Can be combined with the FK and FP systems.
- Can be cut to suit existing construction.
- Can be supplied with a roof for ceiling heights exceeding 3.5 metres.
- The walls are painted in RAL 9018.
- Accessories, see page 14.



Storeroom walls
for normal
conditions



PRODUCT DESCRIPTION – F

Material & design	Dimensions (mm)
Tubular steel frame, wall	
Vertical tubes	19x19
Horizontal tubes	15x15
Tubular steel frame, door	
Vertical tubes	30x20
Horizontal tubes	25x15
Steel mesh	
Vertical wires	Ø 3.0
Horizontal wires	Ø 2.5
Dimensions	50x65
Door opening dimensions	
30-4225750(1)	2000x710
30-4275900(1)	2000x860

DIMENSIONS – F

	Item No	Height (mm)	Width (mm)	
Wall section	30-2020	2250	200	
	30-2025	2250	250	
	30-2035	2250	350	
	30-2040	2250	400	
	30-2055	2250	550	
	30-2060	2250	600	
	30-2080	2250	800	
	30-2100	2250	1000	
	30-2110	2250	1100	
	30-2120	2250	1200	
	30-2130	2250	1300	
	30-2140	2250	1400	
	30-2150	2250	1500	
	Gauge block	30-2002	2250	20
	Door	30-4225750(1)	2250	750
30-4225900(1)		2250	900	

(1) = Right/left-hung.

(2) = Right-hung + cover.

(3) = Left-hung + cover.

(4) = Prepared for cylinder.

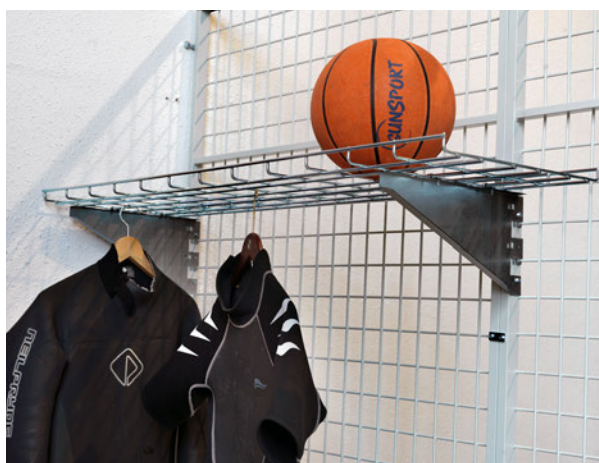


Storeroom FK

Under the surface there is so much more to gain

It is in the details that quality comes to the fore. Our FK storeroom system has a heavy duty tubular design for both its doors and walls, which makes the system secure and stable. Try combining FK with partitions from our F-system, the results are often really impressive.

- Extra robust tubular construction in both doors and walls.
- Can be combined with the F and FP systems.
- Can be cut to suit existing construction.
- Can be supplied with a roof for ceiling heights exceeding 3.5 metres.
- The walls are painted in RAL 9018.
- Accessories, see page 14.



When you set high demands on safety and stability



PRODUCT DESCRIPTION – FK

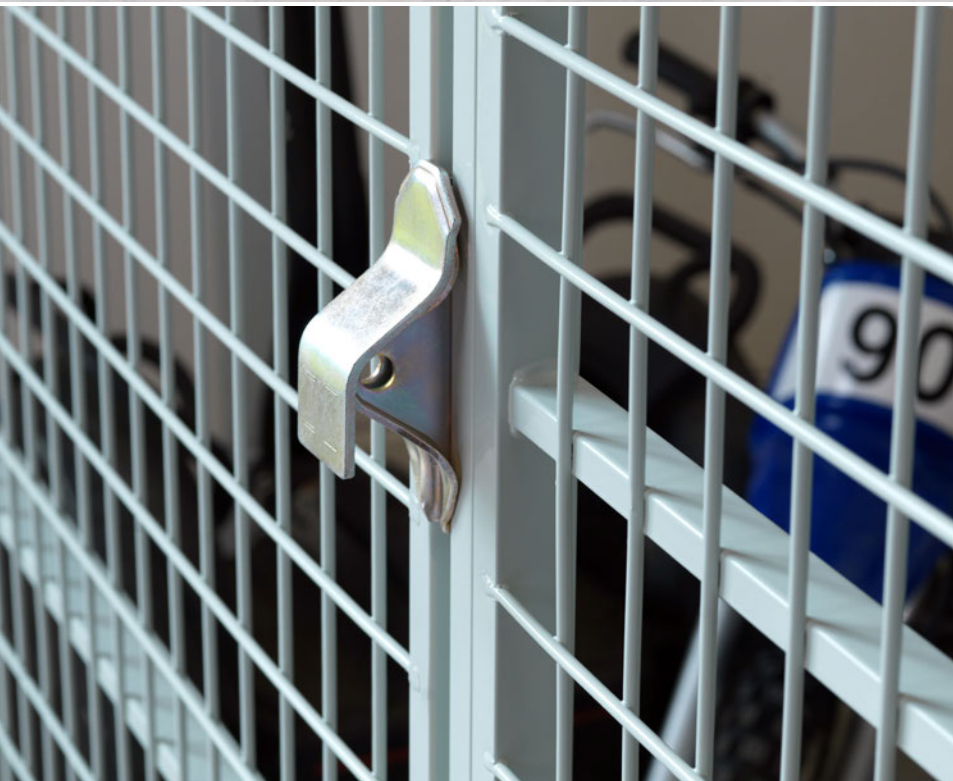
Material & design	Dimensions (mm)
Tubular steel frame, wall	
Vertical tubes	30x20
Horizontal tubes	25x15
Tubular steel frame, door	
Vertical tubes	40x20
Horizontal tubes	35x15
Steel mesh	
Vertical wires	Ø 5.0
Horizontal wires	Ø 4.0
Dimensions	50x65
Door opening dimensions	
40-4225750(1)	2000x710
40-4225900(1)	2000x860

DIMENSIONS – FK

	Item no.	Height (mm)	Width (mm)
Wall section	40-2020	2250	200
	40-2025	2250	250
	40-2035	2250	350
	40-2040	2250	400
	40-2055	2250	550
	40-2060	2250	600
	40-2080	2250	800
	40-2100	2250	1000
	40-2110	2250	1100
	40-2120	2250	1200
Gauge block	40-2002	2250	20
Door	40-4225750(1)	2250	750
	40-4225900(1)	2250	900

(1) = Right/left-hung.
(3) = Left-hung + cover.

(2) = Right-hung + cover.
(4) = Prepared for cylinder.

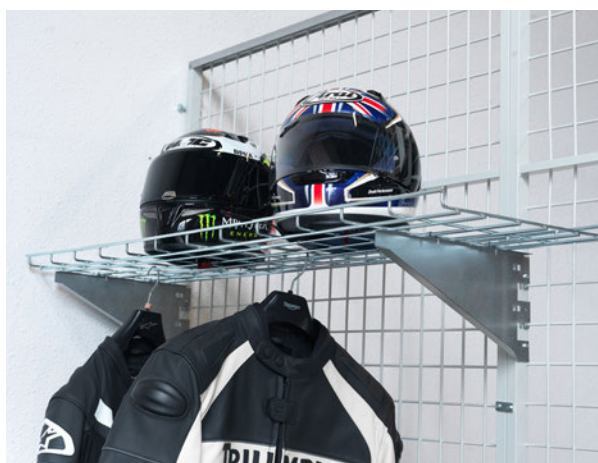


Storeroom FK+

Prepared for a tough challenge?

Axellent F+ storeroom system now has confirmation that it can handle even the toughest challenges through testing and approval by SFF. For FK+, we have incorporated reinforced hinges, lock fittings, doors and walls. Peace of mind signed Axellent!

- With extra reinforced hinges and lock fittings.
- Extra reinforced design for doors and walls.
- Can be combined with the F and FP systems.
- Can be cut to suit existing construction.
- Can be supplied with a roof for ceiling heights exceeding 3.5 metres.
- The walls are painted in RAL 9018.
- Tested and approved according to SFF's norm burglary resistant storage room fittings.
- Accessories, see page 14.



Tested and approved to SFF



PRODUCT DESCRIPTION – FK+

Material & design	Dimensions (mm)
Tubular steel frame, wall	
Vertical tubes	30x20
Horizontal tubes	25x15
Tubular steel frame, door	
Vertical tubes	40x20
Horizontal tubes	35x15
Steel mesh	
Vertical wires	Ø 5.0
Horizontal wires	Ø 5.0
Dimensions	50x65
Door opening dimensions	
45-4225750(1)	2000x710
45-4225900(1)	2000x860

DIMENSIONS – FK+

	Item no.	Height (mm)	Width (mm)
Wall section	45-2020	2250	200
	45-2025	2250	250
	45-2035	2250	350
	45-2040	2250	400
	45-2055	2250	550
	45-2060	2250	600
	45-2080	2250	800
	45-2100	2250	1000
	45-2110	2250	1100
	45-2120	2250	1200
Gauge block	45-2002	2250	20
Door	45-7075	2250	750
	45-7090	2250	900

- (2) = Right-hung + cover.
 (3) = Left-hung + cover.



Storeroom FP

What do you want to conceal? We factor in most things!

A storeroom can reveal a lot. Or nothing at all. At Axelent we factor in all your storage needs. Our FP system featuring covered walls is designed for areas where there are high demands on security and stability without screening.

- Extra robust tubular construction in doors
- Can be combined with the F, FK and FK+ systems.
- Can be cut to suit existing construction.
- Can be supplied with a roof for ceiling heights exceeding 3.2 metres.
- The walls are painted in Sendzimir, the doors in RAL 9018.
- Accessories, see page 14.



When you put high demands on security and stability without screening



PRODUCT DESCRIPTION – FP

Material & design	Dimensions (mm)
Steel wall, profiled sheet	
Depth of profiling	30
Sheet thickness	0.7
Tubular steel frame, door	
Vertical tubes	40x20
Horizontal tubes	35x15
Door opening dimensions	
50-7090	1870x860

DIMENSIONS – FP

	Item no.	Height (mm)	Width (mm)
Wall section	50-2020	2000	200
	50-2040	2000	400
Gauge block	50-2019	2000	0-100
Door	50-7090	2000	900

Our doors are reversible right/left-hung.



Bike racks and other accessories for a complete storeroom

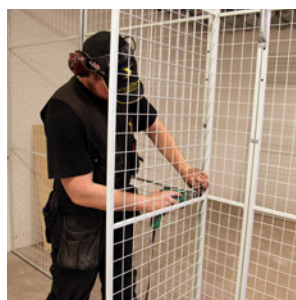
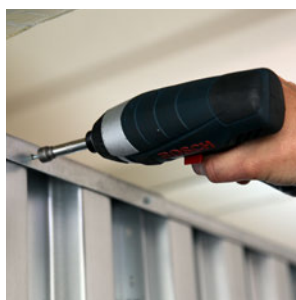
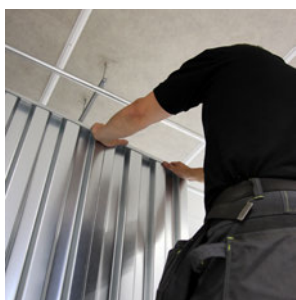
■ **Dual bike rack in galvanised steel.** Duplex bike stand that is vertically adjustable and comes in three different widths: 2+2, 3+3 or 4+4. ■ **Padlock cover.** Can be used on all doors to protect the padlock. ■ **Door for cylinder lock.** For even more secure storage. ■ **Wire mesh shelf.** Shelf with stable consoles that are easy to install regardless of which of our mesh panel systems you select. ■ **Number plate.** Make it easier to find your way. Enter the preferred number and we will fix this.

Smooth and easy?

We'll fix it!

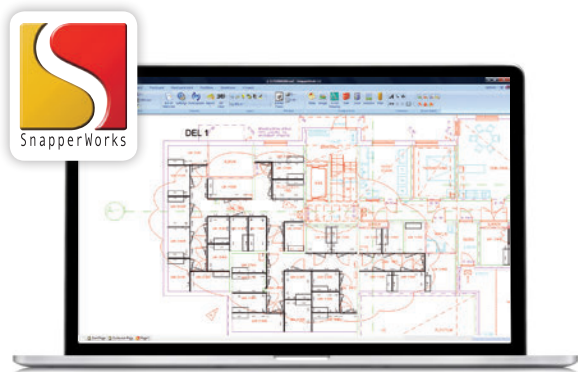
Our All Inclusive offer includes installation if preferred. We have our own, very experienced assembly team who will deliver and assemble your storage solution to ensure the best possible end product.

Of course, you can opt to manage the assembly yourself, but today most of our customers choose to include installation which saves you time and guarantees that you will get exactly what you ordered. This is also a prerequisite for qualifying for Axelent Assistance.



SnapperWorks®

– As simple as it is brilliant



Click and drag!
It is that simple and quick to get an overview of what you need and what your storeroom wall panel system will look like. The drawing then functions as the basis for your order.

Axelent's in-house developed, user-friendly drawing application, SnapperWorks®, enables our customers to get a quick picture of the panels required and what the final apartment storage will look like.

Everything is prepared, all you have to do is click and drag to get a complete drawing with all the parts you need.

The benefits of SnapperWorks® are many...

- ✔ It is tailored to suit Axellent's modules and contains all our apartment storeroom systems.
- ✔ It is easy to learn.
- ✔ The program enables you to import DWG and DXF files and draw, for instance, storeroom walls straight onto the drawing.
- ✔ From specified lengths you can let the program choose suitable widths for the wall panels.
- ✔ It quickly provides you with a complete drawing including material specification.



Burglary? Destruction?

We are ready to help whenever and wherever



Figures show that break-ins and damage to cellar and attic storerooms are on the rise. As well as the loss of things taken and damaged it costs property owners millions a year. At Axelent we do everything in our power to prevent this through secure and strong storerooms, but in the event of this happening, we are able to act quickly to replace the walls that have been damaged or destroyed. We call this Axelent Construction Assistance.



Who qualifies for Axelent Assistance?

*We offer one year's free Axelent Assistance to all our customers on condition that we fit the storeroom walls. Thereafter the customer is offered a 1-3 year extension to the agreement.

NB. Axelent Assistance only covers storeroom systems FK and FP, alternatively system F when used in combination with FK, FK+ or FP.

What does Axelent Assistance entail?

It is your guarantee that in the event of a break-in, Axelent will send replacement materials and assemble them within two weeks of the claim being registered with us. To qualify for Axelent Assistance, an approved lock (Class 2 padlock) must have been used and the break-in must have been reported to the police. The break-in to the building itself must also be verified. Material scratches and buckles do not qualify for Axelent Assistance.



A service that is worth its weight in gold

When we have fitted your storeroom we send you a gold card that qualifies you for our Assistance service. You will also receive regular updates and information about the service.

NB. It is important that we receive the correct end-customer details for the project in question as the end customer is the holder of the gold card.

About Axelent Assistance

Covers storeroom systems FK, FK+ and FP, alternatively F in combination with FK and FP.

One year's free Assistance for all customers who let Axelent fit their storeroom walls.

Axelent will provide and fit replacement materials within two weeks of the claim being registered.

The break-in must have been reported to the police. An approved classed lock must have been used.

A 1-3 year extension to the agreement is available after the first cost-free year.

***These provisions only apply in Sweden. For information about your country, please contact Axelent.**



**Guaranteed
quick action
following
damage or
burglary.**



Axelent Construction collaborates with HBV

With over 160 framework agreements HBV helps its members to manage and develop accommodation for about 850,000 communal apartments. The fact that HBV has annual sales close to SEK 2 billion is a proof of its success. Axelent is now part of these framework agreements and stands ready to join with HBV to secure Storage Sweden.

“Axelent was one of the suppliers who submitted a tender as part of our procurement process,” says Lars Lundmark, procurer at Husbyggnadsvaror HBV Association.

They were one of the suppliers that met the requirements in the procurement and therefore had the possibility of becoming a supplier to HBV’s members.

The set requirements involved, for example, environmental management, assembly organisation, burglary prevention and delivery deadlines.”



AVTAL



It's green!

Proximity to manufacturing, environmentally labelled electricity from wind power and now new packaging, the proprietary X-Pack 2.0 – Axelent thinks and acts green.

By selecting Axelent's storeroom walls, you are also making a green statement. We have infused a well-implemented environmental mindset into all our operations. We have developed our investments in wind power by being a partner in a number of wind turbines. In the near future this will lead us to produce the same amount of green energy as we currently consume.

Axelent Group

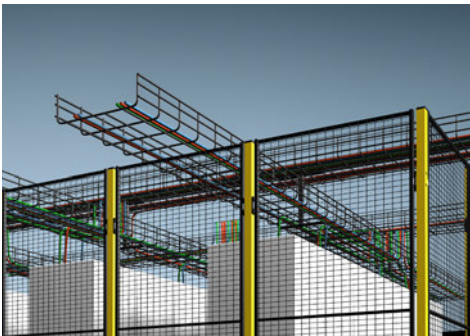
Axelent Group consists of four companies; Axelent, Axelent Wire Tray, Axelent Engineering and Axelent Software. The four companies have a joint vision of making industry competitive and profitable through automation, safety, rational procedures, functions and expertise. All companies are in the growth stage, developing their businesses on both the Swedish and international markets.



AXELENT AB

Axelent AB is a leading and rapidly growing company that produces and sells mesh panel systems for machine guarding and partitioning within industry, warehousing and property protection. Axelent AB also embraces business area Axelent Safety®, which offers complete machine safety solutions.

www.axelent.com



AXELENT WIRE TRAY AB

Axelent Wire Tray develops, manufactures and markets wire trays, brackets, fittings and accessories under the X-tray™ brand in close harmony with the customer for an optimum qualitative, economic and functional solution. The majority of customers can be found in the export market in the sectors: food, Off Shore, Machinery, OEM, Infrastructure and Telecommunications/Data.

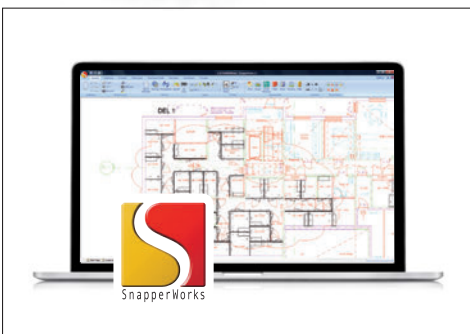
www.axelentwt.com



AXELENT ENGINEERING

Axelent Engineering delivers products and services in automation. The company has three main business areas: Special machinery/ automation solutions, Design and PLM. Complete Design by Axelent Engineering means a turnkey commitment from first sketch to a production-optimised and finished product. Axelent Engineering is a partner of Dassault Systèmes, a world leader in 3D and PLM.

www.hestraautomation.se



AXELENT SOFTWARE

Axelent Software develops and sells user licences for its own software SnapperWorks and Safety Works. The programs are based on distributed platforms and standards that ensure long life, continuous development and easy connectivity to other systems. Axelent Software products are built around simplicity and user-friendliness. Initially developed for Axelent's products, they are now customised for use within a variety of sectors which have standard products.

www.snapperworks.com



Axelent Construction offers complete storage solutions for all types of spaces. Our All Inclusive offer includes everything from consulting, drawing and installation of an exclusive service agreement, Axelent Assistance. All manufacturing is conducted at our own factory in Hillerstorp. Thanks to a well thought out concept, we can also use standard products, to customise our systems and ensure fast deliveries at the same time. The choice is yours!

Haberkorn s.r.o.

Generála Vlachého 305
747 62 Mokré Lazce
Česká republika

Centrála:

tel.: +420 553 757 111
fax: +420 553 757 101
info@haberkorn.cz
www.haberkorn.cz

HABERKORN

divize Oplocení:

tel.: +420 553 757 234
fax: +420 553 757 120
oploceni@haberkorn.cz
www.haberkorn.cz

Kontakt pre Slovensko:

**Haberkorn s.r.o.,
organizačná zložka**
Zavarská 10/B
917 01 Trnava
Slovenská republika

tel.: +421 335 914 600
fax: +421 335 914 601
oplotenie@haberkorn.sk
www.haberkorn.sk