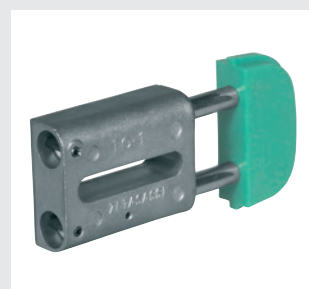


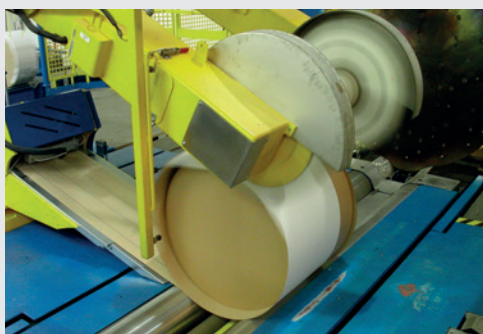
Pohonné elementy Novinky v sortimentu 2016

www.haberkorn.cz

HABERKORN



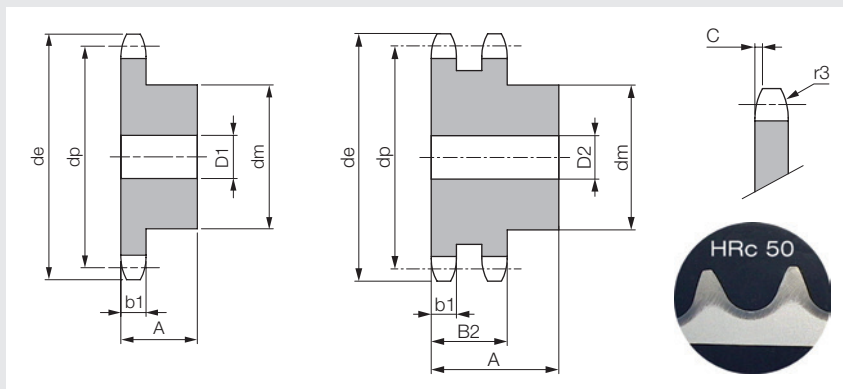
- **jedinečný sortiment mechanických pohonných elementů**
- **zastoupení řady předních světových výrobců s důrazem na kvalitu a inovace**
- **nejrozsáhlejší skladové zásoby ve střední Evropě a pružné dodávky**
- **speciální pohonné elementy dle Vaší výkresové dokumentace**
- **dodávky smontovaných celků, asistence při montáži**
- **návrhy nových technických řešení a optimalizace stávajících našimi odborníky přímo u Vás**
- **identifikace komponentů osazených na Vašich zařízeních**
- **podpora konstruktérů prostřednictvím poradenství, konstrukčních manuálů, výpočtových programů, 2D a 3D knihoven a jiných podkladů**
- **poradenství a organizace školení**



| | |
|--|-----------|
| Řetězová kola s nábojem a kalenými zuby | 2 |
| <hr/> | |
| Ozubená kola s nábojem a kalenými zuby | 7 |
| <hr/> | |
| Lineární vodicí tyče | 13 |
| <hr/> | |
| Napínáky řetězů | 14 |
| <hr/> | |
| Pružné spojky TRASCO® | 22 |
| <hr/> | |
| Svěrná upínací pouzdra nerezová | 25 |
| <hr/> | |
| Stavěcí kroužky | 30 |
| <hr/> | |
| Svěrné kroužky | 33 |

Řetězové kolo s nábojem a kalenými zuby 3/8" x 7/32"

(06 B-1 -2)



Technická data

- poloměr zaoblení zubu r3 10,0mm
- zaoblení zubu C 1,0mm
- šířka zubu b1 5,3mm

Materiál

- ocel C45

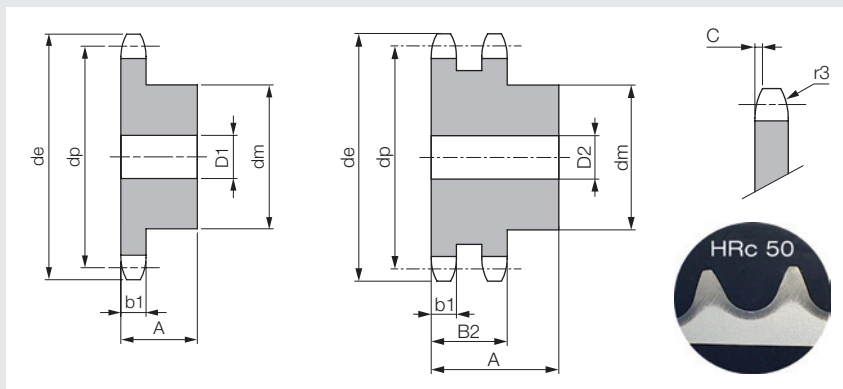
| Počet zubů | de | dp | 1-řadé (simplex) | | | 2-řadé (duplex) | | | | 1-řadé | 2-řadé | Jedn. |
|------------|------|-------|------------------|----|----|-----------------|----|----|------|----------|----------|-------|
| | | | A | dm | D1 | A | dm | D2 | B2 | Obj. kód | Obj. kód | |
| 13 | 43,5 | 39,80 | 25 | 28 | 8 | 30 | 28 | 10 | 15,4 | T78914 | N08127 | ks |
| 14 | 46,5 | 42,80 | 25 | 31 | 8 | 30 | 31 | 10 | 15,4 | T79166 | N08128 | ks |
| 15 | 49,5 | 45,81 | 25 | 34 | 8 | 30 | 34 | 10 | 15,4 | T79167 | N08129 | ks |
| 16 | 52,5 | 48,82 | 28 | 37 | 10 | 30 | 37 | 12 | 15,4 | T79168 | N08130 | ks |
| 17 | 55,5 | 51,83 | 28 | 40 | 10 | 30 | 40 | 12 | 15,4 | T79169 | N08131 | ks |
| 18 | 58,6 | 54,85 | 28 | 43 | 10 | 30 | 43 | 12 | 15,4 | T79170 | N08132 | ks |
| 19 | 61,6 | 57,87 | 28 | 45 | 10 | 30 | 46 | 12 | 15,4 | T79171 | N08133 | ks |
| 20 | 64,6 | 60,89 | 28 | 46 | 10 | 30 | 49 | 12 | 15,4 | T79172 | N08134 | ks |
| 21 | 67,6 | 63,91 | 28 | 48 | 12 | 30 | 52 | 16 | 15,4 | T79173 | N08135 | ks |
| 22 | 70,6 | 66,93 | 28 | 50 | 12 | 30 | 55 | 16 | 15,4 | T79174 | N08136 | ks |
| 23 | 73,7 | 69,95 | 28 | 52 | 12 | 30 | 58 | 16 | 15,4 | T79175 | N08137 | ks |
| 24 | 76,7 | 72,97 | 28 | 54 | 12 | 30 | 61 | 16 | 15,4 | T79176 | N08138 | ks |
| 25 | 79,7 | 76,00 | 28 | 57 | 12 | 30 | 64 | 16 | 15,4 | T79177 | N08139 | ks |
| 30 | 94,8 | 92,12 | 30 | 60 | 12 | 30 | 79 | 16 | 15,4 | T79178 | N08140 | ks |

Poznámky k objednávce

- všechny rozměry uvedeny v mm

Řetězové kolo s nábojem a kalenými zuby 1/2" x 5/16"

(08 B-1 -2)



Technická data

- poloměr zaoblení zubu r3 13,0 mm
- zaoblení zubu C 1,3 mm
- šířka zubu b1 7,2 mm

Materiál

- ocel C45

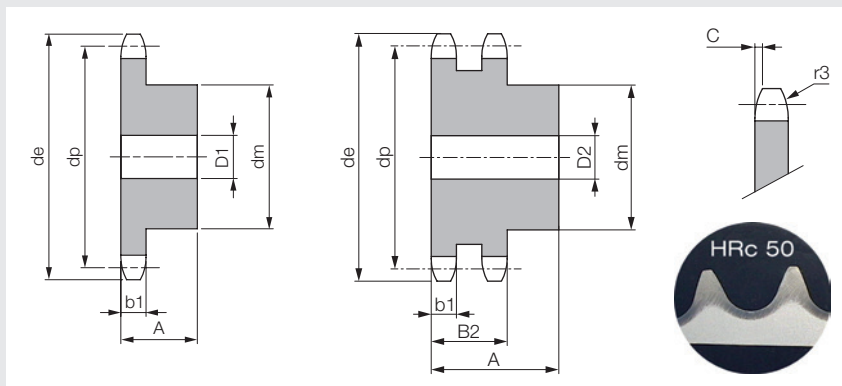
| Počet zubů | de | dp | 1-řadé (simplex) | | | 2-řadé (duplex) | | | | 1-řadé | 2-řadé | Jedn. |
|------------|-------|--------|------------------|----|----|-----------------|-----|----|----|----------|----------|-------|
| | | | A | dm | D1 | A | dm | D2 | B2 | Obj. kód | Obj. kód | |
| 12 | 53,9 | 49,07 | 28 | 33 | 10 | 35 | 35 | 12 | 21 | T79179 | N08141 | ks |
| 13 | 57,9 | 53,06 | 28 | 37 | 10 | 35 | 38 | 12 | 21 | T79190 | N08142 | ks |
| 14 | 61,9 | 57,07 | 28 | 41 | 10 | 35 | 42 | 12 | 21 | T79193 | N08143 | ks |
| 15 | 65,9 | 61,09 | 28 | 45 | 10 | 35 | 46 | 12 | 21 | T79194 | N08144 | ks |
| 16 | 69,9 | 65,10 | 28 | 50 | 12 | 38 | 50 | 16 | 21 | T79196 | N08145 | ks |
| 17 | 74,0 | 69,11 | 28 | 52 | 12 | 38 | 54 | 16 | 21 | T79198 | N08146 | ks |
| 18 | 78,0 | 73,14 | 28 | 56 | 12 | 38 | 58 | 16 | 21 | T79200 | N08147 | ks |
| 19 | 82,0 | 77,16 | 28 | 60 | 12 | 38 | 62 | 16 | 21 | T79201 | N08148 | ks |
| 20 | 86,0 | 81,19 | 28 | 64 | 12 | 38 | 66 | 16 | 21 | T79202 | N08149 | ks |
| 21 | 90,1 | 85,22 | 28 | 68 | 14 | 40 | 70 | 16 | 21 | T79203 | N08150 | ks |
| 22 | 94,1 | 89,24 | 28 | 70 | 14 | 40 | 70 | 16 | 21 | T79204 | N08151 | ks |
| 23 | 98,1 | 93,27 | 28 | 70 | 14 | 40 | 70 | 16 | 21 | T79205 | N08152 | ks |
| 24 | 102,1 | 97,29 | 28 | 70 | 14 | 40 | 75 | 16 | 21 | T79206 | N08153 | ks |
| 25 | 106,2 | 101,33 | 28 | 70 | 14 | 40 | 80 | 16 | 21 | T79208 | N08154 | ks |
| 30 | 126,3 | 121,50 | 30 | 80 | 16 | 40 | 100 | 16 | 21 | T79209 | N08155 | ks |

Poznámky k objednávce

- všechny rozměry uvedeny v mm

Řetězové kolo s nábojem a kalenými zuby 5/8" x 3/8"

(10 B-1 -2)



Technická data

- poloměr zaoblení zubu r3 16,0 mm
- zaoblení zubu C 1,6 mm
- šířka zubu b1 9,1 mm

Materiál

- ocel C45

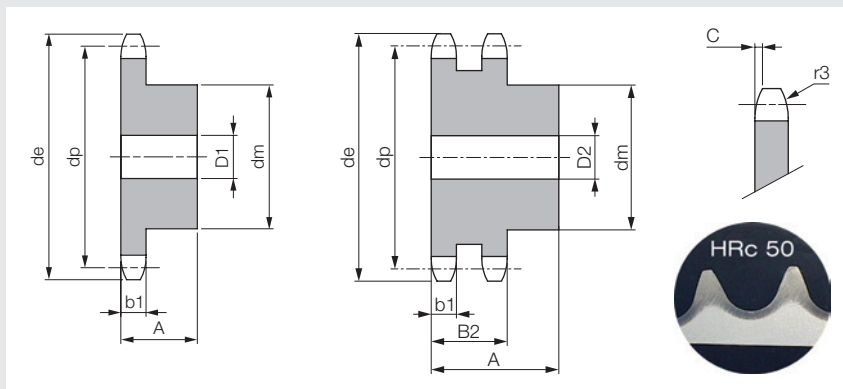
| Počet zubů | de | dp | 1-řadé (simplex) | | | 2-řadé (duplex) | | | | 1-řadé | 2-řadé | Jedn. |
|------------|-------|--------|------------------|----|----|-----------------|-----|----|------|----------|----------|-------|
| | | | A | dm | D1 | A | dm | D2 | B2 | Obj. kód | Obj. kód | |
| 12 | 68,2 | 61,34 | 30 | 42 | 12 | 40 | 44 | 16 | 25,5 | T79211 | N08156 | ks |
| 13 | 73,2 | 66,32 | 30 | 47 | 12 | 40 | 49 | 16 | 25,5 | T79218 | N08157 | ks |
| 14 | 78,2 | 71,34 | 30 | 52 | 12 | 40 | 54 | 16 | 25,5 | T79219 | N08158 | ks |
| 15 | 83,2 | 76,36 | 30 | 57 | 12 | 40 | 59 | 16 | 25,5 | T79220 | N08159 | ks |
| 16 | 88,3 | 81,37 | 30 | 60 | 12 | 45 | 64 | 16 | 25,5 | T79221 | N08160 | ks |
| 17 | 93,3 | 86,39 | 30 | 60 | 12 | 45 | 69 | 16 | 25,5 | T79222 | N08161 | ks |
| 18 | 98,3 | 91,42 | 30 | 70 | 14 | 45 | 74 | 16 | 25,5 | T79223 | N08162 | ks |
| 19 | 103,3 | 96,45 | 30 | 70 | 14 | 45 | 79 | 16 | 25,5 | T79224 | N08163 | ks |
| 20 | 108,4 | 101,49 | 30 | 75 | 14 | 45 | 84 | 16 | 25,5 | T79225 | N08164 | ks |
| 21 | 113,4 | 106,52 | 30 | 75 | 16 | 45 | 85 | 16 | 25,5 | T79226 | N08165 | ks |
| 22 | 118,4 | 111,55 | 30 | 80 | 16 | 45 | 90 | 16 | 25,5 | T79227 | N08166 | ks |
| 23 | 123,5 | 116,58 | 30 | 80 | 16 | 45 | 95 | 16 | 25,5 | T79228 | N08167 | ks |
| 24 | 128,5 | 121,62 | 30 | 80 | 16 | 45 | 100 | 16 | 25,5 | T79229 | N08168 | ks |
| 25 | 133,6 | 126,66 | 30 | 80 | 16 | 45 | 105 | 16 | 25,5 | T79230 | N08169 | ks |
| 30 | 158,8 | 151,87 | 35 | 90 | 20 | 45 | 120 | 20 | 25,5 | T79231 | N08170 | ks |

Poznámky k objednávce

- všechny rozměry uvedeny v mm

Řetězové kolo s nábojem a kalenými zuby 3/4" x 7/16"

(12 B-1 -2)



Technická data

- poloměr zaoblení zubu r3 19,0mm
- zaoblení zubu C 2,0mm
- šířka zubu b1 11,1mm

Materiál

- ocel C45

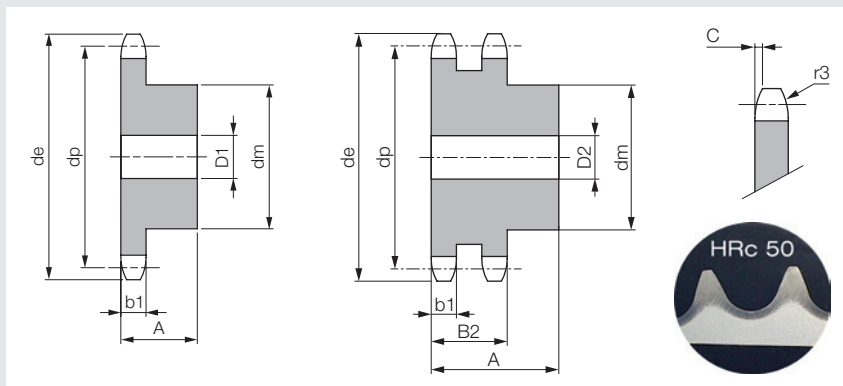
| Počet zubů | de | dp | 1-řadé (simplex) | | | 2-řadé (duplex) | | | | 1-řadé | 2-řadé | Jedn. |
|------------|-------|--------|------------------|----|----|-----------------|-----|----|------|----------|----------|-------|
| | | | A | dm | D1 | A | dm | D2 | B2 | Obj. kód | Obj. kód | |
| 12 | 81,8 | 73,60 | 35 | 52 | 16 | 50 | 53 | 16 | 30,3 | T79232 | N08171 | ks |
| 13 | 87,8 | 79,59 | 35 | 58 | 16 | 50 | 59 | 16 | 30,3 | T79233 | N08172 | ks |
| 14 | 93,8 | 85,61 | 35 | 64 | 16 | 50 | 65 | 16 | 30,3 | T79234 | N08173 | ks |
| 15 | 99,8 | 91,63 | 35 | 70 | 16 | 50 | 71 | 16 | 30,3 | T79235 | N08174 | ks |
| 16 | 105,8 | 97,65 | 35 | 75 | 16 | 50 | 77 | 20 | 30,3 | T79236 | N08175 | ks |
| 17 | 111,9 | 103,67 | 35 | 80 | 16 | 50 | 83 | 20 | 30,3 | T79237 | N08176 | ks |
| 18 | 117,9 | 109,71 | 35 | 80 | 16 | 50 | 89 | 20 | 30,3 | T79238 | N08177 | ks |
| 19 | 123,9 | 115,75 | 35 | 80 | 16 | 50 | 95 | 20 | 30,3 | T79239 | N08178 | ks |
| 20 | 130,0 | 121,78 | 35 | 80 | 16 | 50 | 100 | 20 | 30,3 | T79240 | N08179 | ks |
| 21 | 136,0 | 127,82 | 40 | 90 | 20 | 50 | 100 | 20 | 30,3 | T79241 | N08180 | ks |
| 22 | 142,0 | 133,86 | 40 | 90 | 20 | 50 | 100 | 20 | 30,3 | T79242 | N08181 | ks |
| 23 | 148,1 | 139,90 | 40 | 90 | 20 | 50 | 110 | 20 | 30,3 | T79243 | N08182 | ks |
| 24 | 154,1 | 145,94 | 40 | 90 | 20 | 50 | 110 | 20 | 30,3 | T79244 | N08068 | ks |
| 25 | 160,2 | 152,00 | 40 | 90 | 20 | 50 | 120 | 20 | 30,3 | T79245 | N08063 | ks |
| 30 | 190,4 | 182,25 | 40 | 95 | 20 | 50 | 120 | 20 | 30,3 | T79246 | N08069 | ks |

Poznámky k objednávce

- všechny rozměry uvedeny v mm

Řetězové kolo s nábojem a kalenými zuby 1" x 17,02 mm

(16 B-1 -2)



Technická data

- poloměr zaoblení zubu r3 26,0 mm
- zaoblení zubu C 2,5 mm
- šířka zubu b1 16,2 mm

Materiál

- ocel C45

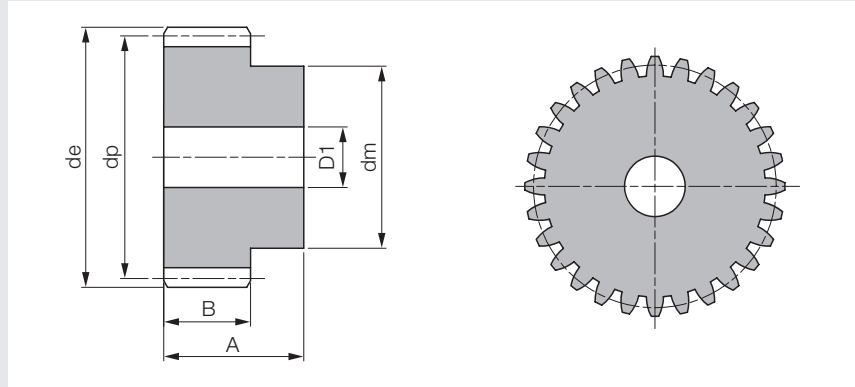
| Počet zubů | de | dp | 1-řadé (simplex) | | | 2-řadé (duplex) | | | | 1-řadé | 2-řadé | Jedn. |
|------------|-------|--------|------------------|-----|----|-----------------|-----|----|------|----------|----------|-------|
| | | | A | dm | D1 | A | dm | D2 | B2 | Obj. kód | Obj. kód | |
| 12 | 109,7 | 98,14 | 40 | 69 | 16 | 70 | 72 | 20 | 47,7 | T79247 | N08183 | ks |
| 13 | 117,7 | 106,12 | 40 | 78 | 16 | 70 | 80 | 20 | 47,7 | T79249 | N08184 | ks |
| 14 | 125,7 | 114,15 | 40 | 84 | 16 | 70 | 88 | 20 | 47,7 | T79250 | N08185 | ks |
| 15 | 133,7 | 122,17 | 40 | 92 | 16 | 70 | 96 | 20 | 47,7 | T79251 | N08186 | ks |
| 16 | 141,8 | 130,20 | 45 | 100 | 20 | 70 | 104 | 20 | 47,7 | T79252 | N08187 | ks |
| 17 | 149,8 | 138,22 | 45 | 100 | 20 | 70 | 112 | 20 | 47,7 | T79253 | N08188 | ks |
| 18 | 157,8 | 146,28 | 45 | 100 | 20 | 70 | 120 | 20 | 47,7 | T79254 | N08189 | ks |
| 19 | 165,9 | 154,33 | 45 | 100 | 20 | 70 | 128 | 20 | 47,7 | T79255 | N08190 | ks |
| 20 | 173,9 | 162,38 | 45 | 100 | 20 | 70 | 130 | 20 | 47,7 | T79256 | N08191 | ks |
| 21 | 182,0 | 170,43 | 50 | 110 | 20 | 70 | 130 | 25 | 47,7 | T79257 | N08192 | ks |
| 22 | 190,1 | 178,48 | 50 | 110 | 20 | 70 | 130 | 25 | 47,7 | T79258 | N08193 | ks |
| 23 | 198,1 | 186,53 | 50 | 110 | 20 | 70 | 130 | 25 | 47,7 | T79259 | N08194 | ks |
| 24 | 206,1 | 194,59 | 50 | 110 | 20 | 70 | 130 | 25 | 47,7 | T79260 | N08195 | ks |
| 25 | 214,2 | 202,65 | 50 | 110 | 20 | 70 | 130 | 25 | 47,7 | T79261 | N08196 | ks |
| 30 | 254,6 | 243,00 | 50 | 120 | 20 | 70 | 130 | 25 | 47,7 | T79262 | N08197 | ks |

Poznámky k objednávce

- všechny rozměry uvedeny v mm

Ozubené kolo s nábojem, přímým ozubením a kalenými zuby

Modul 2,0



Technická data

- šířka zubu B 20mm
- celková šířka A 35mm
- úhel záběru 20°

Materiál

- ocel C45

| Počet zubů | de | dp | dm | D1 | Obj. kód | Jedn. | Počet zubů | de | dp | dm | D1 | Obj. kód | Jedn. |
|------------|----|----|----|----|----------|-------|------------|-----|-----|----|----|----------|-------|
| 12 | 28 | 24 | 18 | 10 | N08075 | ks | 30 | 64 | 60 | 40 | 14 | N08074 | ks |
| 15 | 34 | 30 | 24 | 10 | N08076 | ks | 36 | 76 | 72 | 45 | 14 | N08082 | ks |
| 18 | 40 | 36 | 25 | 10 | N08077 | ks | 40 | 84 | 80 | 50 | 14 | N08083 | ks |
| 20 | 44 | 40 | 30 | 10 | N08078 | ks | 50 | 104 | 100 | 70 | 16 | N08084 | ks |
| 24 | 52 | 48 | 35 | 12 | N08079 | ks | 60 | 124 | 120 | 70 | 16 | N08085 | ks |
| 25 | 54 | 50 | 35 | 12 | N08080 | ks | | | | | | | |

Poznámky k objednávce

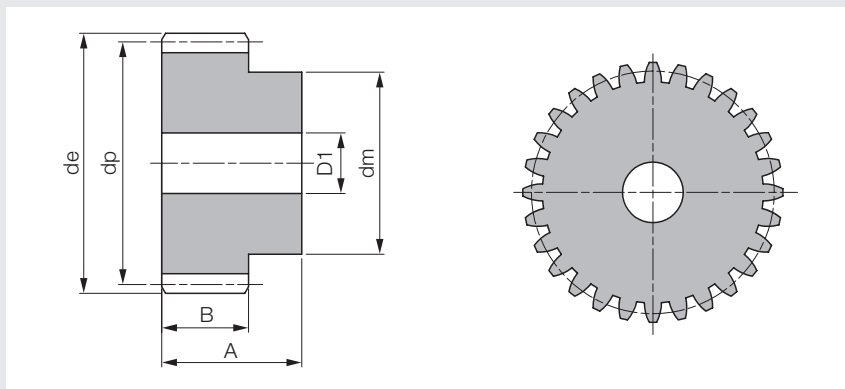
- všechny rozměry uvedeny v mm

Ozubená kola

S nábojem a kalenými zuby

Ozubené kolo s nábojem, přímým ozubením a kalenými zuby

Modul 2,5



Technická data

- šířka zubu B 25mm
- celková šířka A 45mm
- úhel záběru 20°

Materiál

- ocel C45

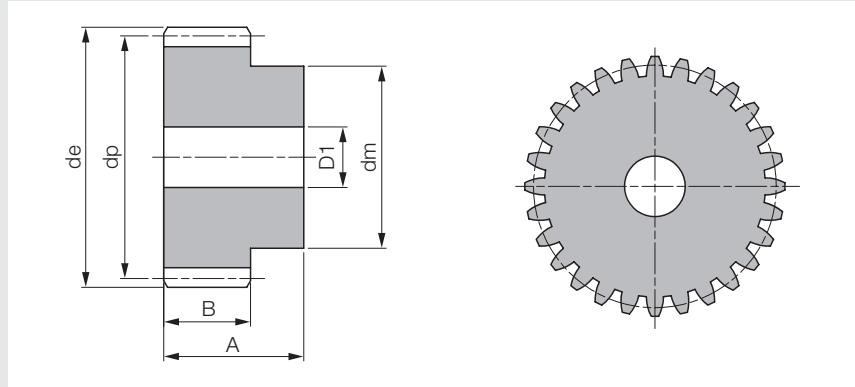
| Počet zubů | de | dp | dm | D1 | Obj. kód | Jedn. | Počet zubů | de | dp | dm | D1 | Obj. kód | Jedn. |
|------------|------|------|----|----|----------|-------|------------|-------|-------|-----|----|----------|-------|
| 12 | 35,0 | 30,0 | 22 | 10 | N08086 | ks | 30 | 80,0 | 75,0 | 55 | 14 | N08092 | ks |
| 15 | 42,5 | 37,5 | 30 | 10 | N08087 | ks | 36 | 95,0 | 90,0 | 60 | 16 | N08093 | ks |
| 18 | 50,0 | 45,0 | 35 | 12 | N08088 | ks | 40 | 105,0 | 100,0 | 70 | 16 | N08094 | ks |
| 20 | 55,0 | 50,0 | 40 | 12 | N08089 | ks | 50 | 130,0 | 125,0 | 80 | 20 | N08095 | ks |
| 24 | 65,0 | 60,0 | 45 | 14 | N08090 | ks | 60 | 155,0 | 150,0 | 100 | 20 | N08096 | ks |
| 25 | 67,5 | 62,5 | 50 | 14 | N08091 | ks | | | | | | | |

Poznámky k objednávce

- všechny rozměry uvedeny v mm

Ozubené kolo s nábojem, přímým ozubením a kalenými zuby

Modul 3,0



Technická data

- šířka zubu B 30mm
- celková šířka A 50mm
- úhel záběru 20°

Materiál

- ocel C45

| Počet zubů | de | dp | dm | D1 | Obj. kód | Jedn. | Počet zubů | de | dp | dm | D1 | Obj. kód | Jedn. |
|------------|----|----|----|----|----------|-------|------------|-----|-----|----|----|----------|-------|
| 12 | 42 | 36 | 27 | 12 | N08097 | ks | 25 | 81 | 75 | 60 | 16 | N08102 | ks |
| 15 | 51 | 45 | 35 | 12 | N08098 | ks | 30 | 96 | 90 | 60 | 16 | N08103 | ks |
| 18 | 60 | 54 | 45 | 14 | N08099 | ks | 36 | 114 | 108 | 70 | 20 | N08104 | ks |
| 20 | 66 | 60 | 45 | 14 | N08100 | ks | 40 | 126 | 120 | 80 | 20 | N08105 | ks |
| 24 | 78 | 72 | 50 | 16 | N08101 | ks | | | | | | | |

Poznámky k objednání

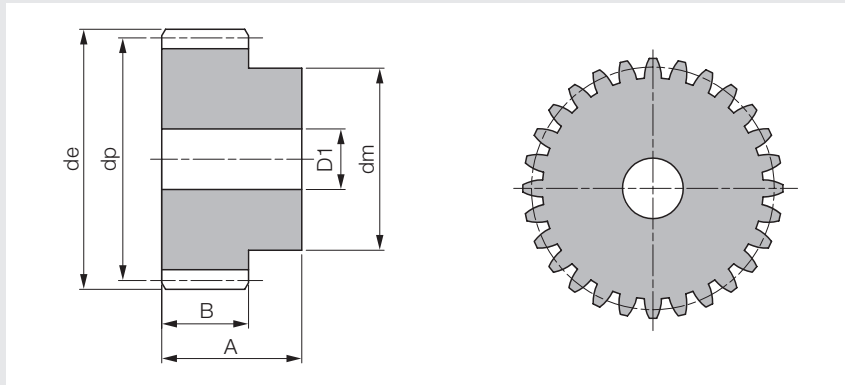
- všechny rozměry uvedeny v mm

Ozubená kola

S nábojem a kalenými zuby

Ozubené kolo s nábojem, přímým ozubením a kalenými zuby

Modul 4,0



Technická data

- šířka zubu B 40mm
- celková šířka A 60mm
- úhel záběru 20°

Materiál

- ocel C45

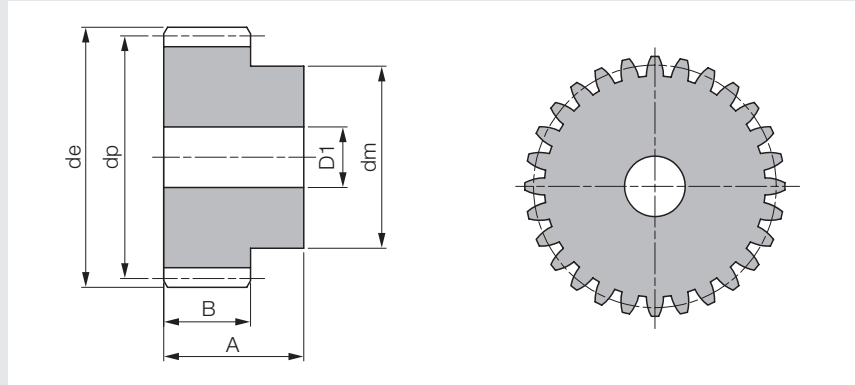
| Počet zubů | de | dp | dm | D1 | Obj. kód | Jedn. | Počet zubů | de | dp | dm | D1 | Obj. kód | Jedn. |
|------------|----|----|----|----|----------|-------|------------|-----|-----|----|----|----------|-------|
| 12 | 56 | 48 | 35 | 14 | N08106 | ks | 24 | 104 | 96 | 75 | 20 | N08110 | ks |
| 15 | 68 | 60 | 45 | 14 | N08107 | ks | 25 | 108 | 100 | 75 | 20 | N08070 | ks |
| 18 | 80 | 72 | 50 | 16 | N08108 | ks | 30 | 128 | 120 | 75 | 20 | N08111 | ks |
| 20 | 88 | 80 | 60 | 16 | N08109 | ks | 36 | 152 | 144 | 80 | 25 | N08112 | ks |

Poznámky k objednávce

- všechny rozměry uvedeny v mm

Ozubené kolo s nábojem, přímým ozubením a kalenými zuby

Modul 5,0



Technická data

- šířka zubu B 50mm
- celková šířka A 75mm
- úhel záběru 20°

Materiál

- ocel C45

| Počet zubů | de | dp | dm | D1 | Obj. kód | Jedn. | Počet zubů | de | dp | dm | D1 | Obj. kód | Jedn. |
|------------|-----|-----|----|----|----------|-------|------------|-----|-----|-----|----|----------|-------|
| 12 | 70 | 60 | 45 | 20 | N08113 | ks | 24 | 130 | 120 | 90 | 20 | N08117 | ks |
| 15 | 85 | 75 | 60 | 20 | N08114 | ks | 25 | 135 | 125 | 90 | 20 | N08118 | ks |
| 18 | 100 | 90 | 70 | 20 | N08115 | ks | 30 | 160 | 150 | 110 | 25 | N08119 | ks |
| 20 | 110 | 100 | 80 | 20 | N08116 | ks | | | | | | | |

Poznámky k objednávce

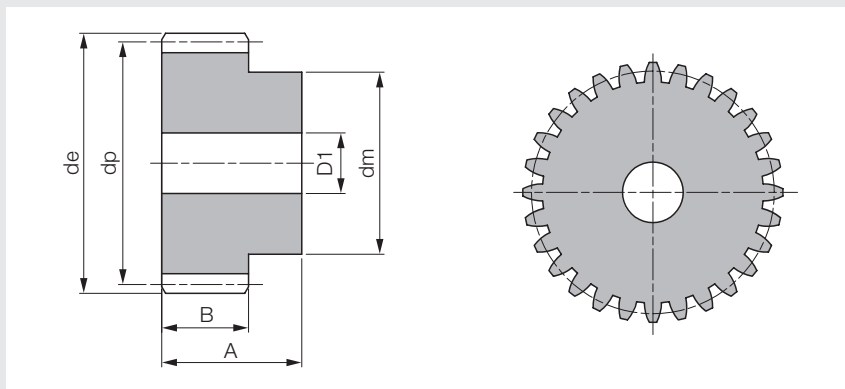
- všechny rozměry uvedeny v mm

Ozubená kola

S nábojem a kalenými zuby

Ozubené kolo s nábojem, přímým ozubením a kalenými zuby

Modul 6,0



Technická data

- šířka zubu B 60mm
- celková šířka A 80mm
- úhel záběru 20°

Materiál

- ocel C45

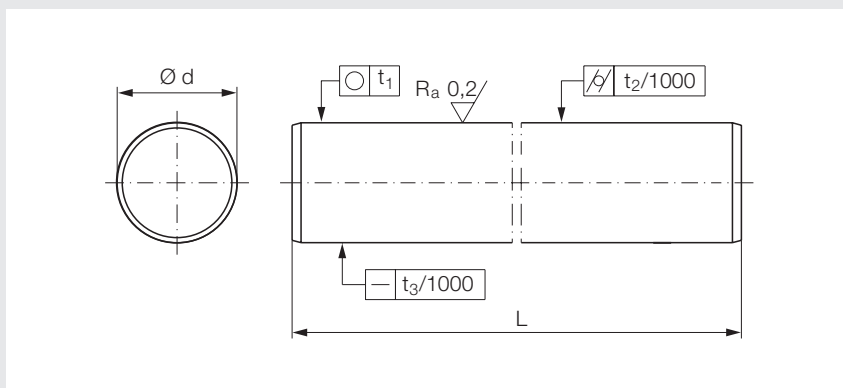
| Počet zubů | de | dp | dm | D1 | Obj. kód | Jedn. | Počet zubů | de | dp | dm | D1 | Obj. kód | Jedn. |
|------------|-----|-----|----|----|----------|-------|------------|-----|-----|-----|----|----------|-------|
| 12 | 84 | 72 | 54 | 20 | N08120 | ks | 20 | 132 | 120 | 90 | 20 | N08124 | ks |
| 15 | 102 | 90 | 70 | 20 | N08121 | ks | 24 | 156 | 144 | 110 | 25 | N08125 | ks |
| 16 | 108 | 95 | 75 | 20 | N08122 | ks | 25 | 162 | 150 | 110 | 25 | N08126 | ks |
| 18 | 120 | 108 | 80 | 20 | N08123 | ks | | | | | | | |

Poznámky k objednávce

- všechny rozměry uvedeny v mm

Lineární tyč kruhová

Kalená, broušená



Poznámky

- pro standardní délky tyčí platí délková tolerance ± 200 mm
- u standardních délek lineárních tyčí v délce cca 75 mm od obou konců tyče není garantována průměrová tolerance a hodnota tvrdosti
- k dodání také v nestandardních délkách, provedeníh a materiálech

Technická data

- povrchová tvrdost 62 \pm 2 HRC
- povrchově kaleno SHD dle EN ISO 15787
- povrchová drsnost Ra max. 0,20 μm

Materiál

- ocel Cf53

| Označení | $\varnothing d$ | Hloubka zakalení SHD min. | Kruhovitost t_1 max. [μm] | Válcovitost t_2 max. [μm] | Přímost t_3 max. [mm/m] | Tolerance ISO h6 [μm] | Délka L | Hmotnost [kg/m] | Obj. kód | Jedn. |
|----------|-----------------|---------------------------|------------------------------------|------------------------------------|---------------------------|------------------------------|---------|-----------------|----------|-------|
| W 4 | 4 | 0,4 | 4 | 6 | 0,30 | 0 / -8 | 4.000 | 0,10 | 422564 | m |
| W 5 | 5 | 0,4 | 4 | 6 | 0,25 | 0 / -8 | 4.000 | 0,15 | T36258 | m |
| W 6 | 6 | 0,4 | 4 | 6 | 0,25 | 0 / -8 | 6.000 | 0,22 | T18338 | m |
| W 8 | 8 | 0,4 | 4 | 6 | 0,20 | 0 / -9 | 6.000 | 0,39 | T18339 | m |
| W 10 | 10 | 0,4 | 4 | 6 | 0,20 | 0 / -9 | 6.000 | 0,62 | T18340 | m |
| W 12 | 12 | 0,6 | 5 | 8 | 0,20 | 0 / -11 | 6.000 | 0,89 | T26894 | m |
| W 14 | 14 | 0,6 | 5 | 8 | 0,20 | 0 / -11 | 6.000 | 1,21 | T18341 | m |
| W 15 | 15 | 0,6 | 5 | 8 | 0,20 | 0 / -11 | 6.000 | 1,39 | T34198 | m |
| W 16 | 16 | 0,6 | 5 | 8 | 0,20 | 0 / -11 | 6.000 | 1,58 | T15466 | m |
| W 20 | 20 | 0,9 | 6 | 9 | 0,20 | 0 / -13 | 6.000 | 2,46 | T15467 | m |
| W 25 | 25 | 0,9 | 6 | 9 | 0,15 | 0 / -13 | 6.000 | 3,85 | T15468 | m |
| W 30 | 30 | 0,9 | 6 | 9 | 0,15 | 0 / -13 | 6.000 | 5,55 | T15469 | m |
| W 35 | 35 | 1,5 | 7 | 11 | 0,15 | 0 / -16 | 6.000 | 7,55 | T37435 | m |
| W 40 | 40 | 1,5 | 7 | 11 | 0,15 | 0 / -16 | 6.000 | 9,86 | T15470 | m |
| W 45 | 45 | 1,5 | 7 | 11 | 0,15 | 0 / -16 | 6.000 | 12,48 | T63394 | m |
| W 50 | 50 | 1,5 | 7 | 11 | 0,15 | 0 / -16 | 6.000 | 15,41 | T18342 | m |
| W 60 | 60 | 2,2 | 8 | 13 | 0,15 | 0 / -19 | 6.000 | 22,20 | T33205 | m |
| W 70 | 70 | 2,2 | 8 | 13 | 0,15 | 0 / -19 | 6.000 | 30,20 | T59590 | m |
| W 80 | 80 | 2,2 | 8 | 13 | 0,15 | 0 / -19 | 6.000 | 39,44 | T46349 | m |
| W 90 | 90 | 3,2 | 10 | 15 | 0,15 | 0 / -22 | 6.000 | 49,92 | N08596 | m |
| W 100 | 100 | 3,2 | 10 | 15 | 0,15 | 0 / -22 | 6.000 | 61,62 | N08597 | m |

Poznámky k objednání

- všechny rozměry uvedeny v mm

Kluzný napínák řetězů TO

S plastovým třmenem, pro 1-řadé, 2-řadé a 3-řadé válečkové řetězy



Poznámky

- použití automatického napínáku řetězů prodlužuje životnost řetězu a kompenzuje dopady prodlužování řetězu, současně tlumí vibrace a hluk
- napínák série TO má dlouhou životnost a je vyroben z vysoce kvalitního materiálu
- určen pro pracovní teplotu max. 65 °C
- K dodání také:
 1. v provedení pro potravinářský průmysl s čepy a pružinami z nerezové oceli INOX AISI 304
 2. s jinými tvary plastového třmenu
- S = 1-řadý, D = 2-řadý, T = 3-řadý

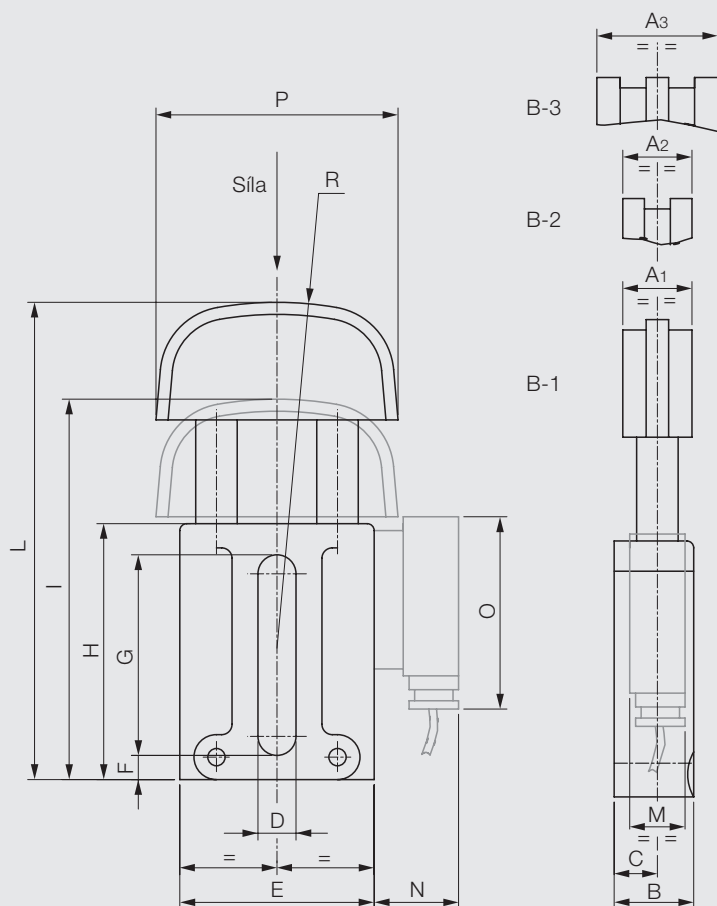
| Typ | Síla [N] | | A ₁ | A ₂ | A ₃ | B | C | D | E | F | G | H | I | L | M | N | O | P | R | Obj. kód | Jedn. |
|---------------|----------|------|----------------|----------------|----------------|----|------|------|------|---|----|-----|-----|-----|----|----|------|-----|-----|----------|-------|
| | min. | max. | | | | | | | | | | | | | | | | | | | |
| T0-1 3/8" S | 130 | 250 | 20 | - | - | 23 | 12,5 | 11,0 | 56,2 | 7 | 58 | 74 | 110 | 138 | - | - | - | 70 | 100 | 554324 | ks |
| T0-1 3/8" D | 130 | 250 | - | 20 | - | 23 | 12,5 | 11,0 | 56,2 | 7 | 58 | 74 | 110 | 138 | - | - | - | 70 | 100 | 554325 | ks |
| T0-1 3/8" T | 130 | 250 | - | - | 25,0 | 23 | 12,5 | 11,0 | 56,2 | 7 | 58 | 74 | 110 | 138 | - | - | - | 70 | 100 | 554326 | ks |
| T0-1 1/2" S | 130 | 250 | 20 | - | - | 23 | 12,5 | 11,0 | 56,2 | 7 | 58 | 74 | 110 | 138 | - | - | - | 70 | 100 | 218141 | ks |
| T0-1 1/2" D | 130 | 250 | - | 20 | - | 23 | 12,5 | 11,0 | 56,2 | 7 | 58 | 74 | 110 | 138 | - | - | - | 70 | 100 | 554327 | ks |
| T0-1 1/2" T | 130 | 250 | - | - | 25,0 | 23 | 12,5 | 11,0 | 56,2 | 7 | 58 | 74 | 110 | 138 | - | - | - | 70 | 100 | 554328 | ks |
| T0-1 5/8" S | 130 | 250 | 20 | - | - | 23 | 12,5 | 11,0 | 56,2 | 7 | 58 | 74 | 110 | 138 | - | - | - | 70 | 100 | 554329 | ks |
| T0-1 5/8" D | 130 | 250 | - | 25 | - | 23 | 12,5 | 11,0 | 56,2 | 7 | 58 | 74 | 110 | 138 | - | - | - | 70 | 100 | 554330 | ks |
| T0-1 5/8" T | 130 | 250 | - | - | 41,5 | 23 | 12,5 | 11,0 | 56,2 | 7 | 58 | 74 | 110 | 138 | - | - | - | 70 | 100 | 554331 | ks |
| T0-2 5/8" S | 180 | 420 | 22 | - | - | 28 | 15,0 | 12,5 | 70,5 | 9 | 70 | 87 | 133 | 169 | - | - | - | 90 | 120 | 554332 | ks |
| T0-2 5/8" D | 180 | 420 | - | 25 | - | 28 | 15,0 | 12,5 | 70,5 | 9 | 70 | 87 | 133 | 169 | - | - | - | 90 | 120 | 554333 | ks |
| T0-2 5/8" T | 180 | 420 | - | - | 41,5 | 28 | 15,0 | 12,5 | 70,5 | 9 | 70 | 87 | 133 | 169 | - | - | - | 90 | 120 | 554334 | ks |
| T0-2 3/4" S | 180 | 420 | 22 | - | - | 28 | 15,0 | 12,5 | 70,5 | 9 | 70 | 87 | 133 | 169 | - | - | - | 90 | 120 | 218144 | ks |
| T0-2 3/4" D | 180 | 420 | - | 30 | - | 28 | 15,0 | 12,5 | 70,5 | 9 | 70 | 87 | 133 | 169 | - | - | - | 90 | 120 | 554335 | ks |
| T0-2 3/4" T | 180 | 420 | - | - | 49,0 | 28 | 15,0 | 12,5 | 70,5 | 9 | 70 | 87 | 133 | 169 | - | - | - | 90 | 120 | 554336 | ks |
| T0-3 1" S | 300 | 650 | 25 | - | - | 33 | 17,5 | 14,5 | 82,0 | 9 | 86 | 104 | 160 | 202 | 21 | 35 | 70,0 | 110 | 140 | 554337 | ks |
| T0-3 1" D | 300 | 650 | - | 45 | - | 33 | 17,5 | 14,5 | 82,0 | 9 | 86 | 104 | 160 | 202 | 21 | 21 | 70,0 | 110 | 140 | 554338 | ks |
| T0-3 1" T | 300 | 650 | - | - | 78,0 | 33 | 17,5 | 14,5 | 82,0 | 9 | 86 | 104 | 160 | 202 | 21 | 21 | 70,0 | 110 | 140 | 554339 | ks |
| T0-3 1 1/4" S | 300 | 650 | 25 | - | - | 33 | 17,5 | 14,5 | 82,0 | 9 | 86 | 104 | 160 | 202 | 21 | 35 | 70,0 | 110 | 140 | 554340 | ks |
| T0-3 1 1/4" D | 300 | 650 | - | 54 | - | 33 | 17,5 | 14,5 | 82,0 | 9 | 86 | 104 | 160 | 202 | 21 | 21 | 70,0 | 110 | 140 | 554341 | ks |
| T0-3 1 1/4" T | 300 | 650 | - | - | 90,0 | 33 | 17,5 | 14,5 | 82,0 | 9 | 86 | 104 | 160 | 202 | 21 | 21 | 70,0 | 110 | 140 | 554342 | ks |
| T0-3 1 1/2" S | 300 | 650 | 25 | - | - | 33 | 17,5 | 14,5 | 82,0 | 9 | 86 | 104 | 160 | 202 | 21 | 35 | 70,0 | 110 | 140 | 554343 | ks |
| T0-3 1 1/2" D | 300 | 650 | - | 71 | - | 33 | 17,5 | 14,5 | 82,0 | 9 | 86 | 104 | 160 | 202 | 21 | 21 | 70,0 | 110 | 140 | 554344 | ks |
| T0-3 1 1/2" T | 300 | 650 | - | - | 119,0 | 33 | 17,5 | 14,5 | 82,0 | 9 | 86 | 104 | 160 | 202 | 21 | 21 | 70,0 | 110 | 140 | 554345 | ks |

Poznámky k objednání

- všechny rozměry uvedeny v mm

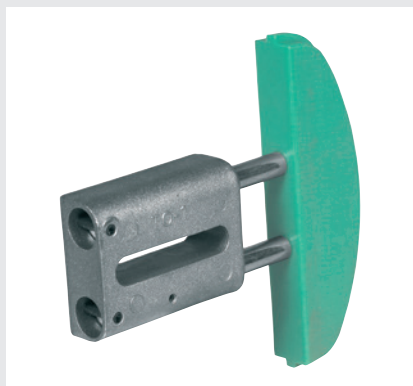
Kluzný napínák řetězů TO

S plastovým třmenem, pro 1-řadé, 2-řadé a 3-řadé válečkové řetězy



Kluzný napínák řetězů TA

S plastovým třmenem, pro 1-řadé, 2-řadé a 3-řadé válečkové řetězy



Poznámky

- použití automatického napínáku řetězů prodlužuje životnost řetězu a kompenzuje dopady prodlužování řetězu, současně tlumí vibrace a hluk
- napínák série TA má dlouhou životnost a je vyroben z vysoce kvalitního materiálu
- určen pro pracovní teplotu max. 65 °C
- třmen z plastu odolný vůči opotřebení s nižším součinitelem tření (dynamický součinitel tření μ 0,06 při použití nemazané oceli)
- broušené, extrémně pevné čepy z oceli
- samomazná bronzová pouzdra pro pohyb v ose
- vhodné i pro reverzní pohony
- S = 1-řadý, D = 2-řadý, T = 3-řadý

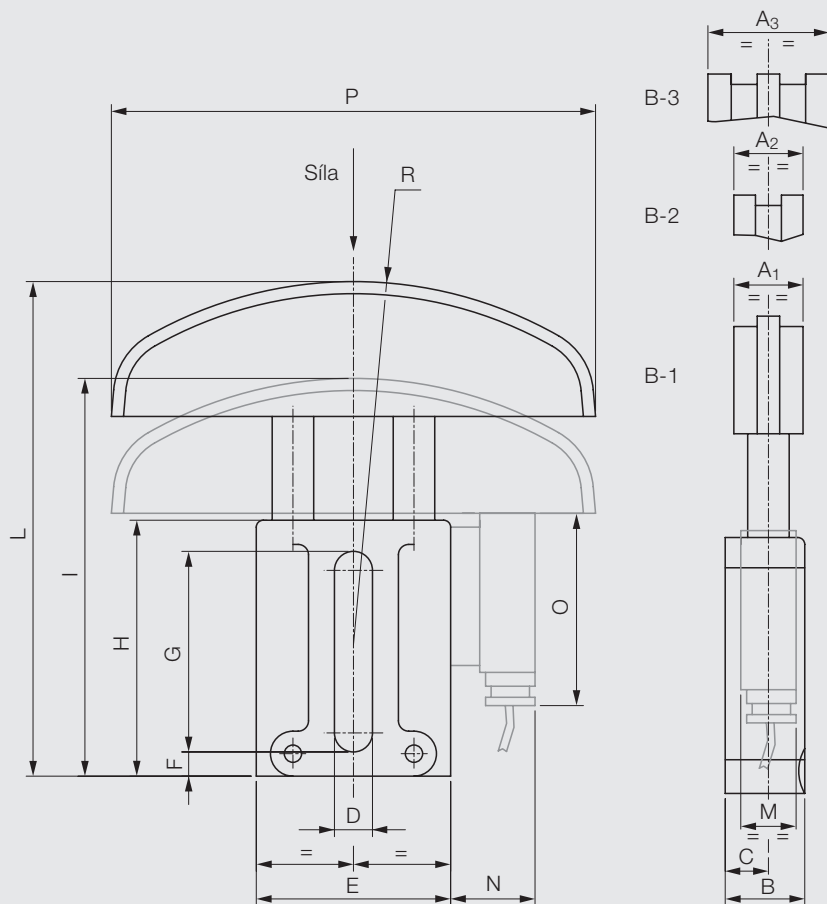
| Typ | Síla [N] | | A ₁ | A ₂ | A ₃ | B | C | D | E | F | G | H | I | L | M | N | O | P | R | Obj. kód | Jedn. |
|---------------|----------|------|----------------|----------------|----------------|----|------|------|------|---|----|-----|-----|-----|----|----|----|-----|-----|----------|-------|
| | min. | max. | | | | | | | | | | | | | | | | | | | |
| TA-1 3/8" S | 130 | 250 | 20,0 | - | - | 23 | 12,5 | 11,0 | 56,2 | 7 | 58 | 74 | 115 | 143 | - | - | - | 140 | 120 | 554350 | ks |
| TA-1 3/8" D | 130 | 250 | - | 20 | - | 23 | 12,5 | 11,0 | 56,2 | 7 | 58 | 74 | 115 | 143 | - | - | - | 140 | 120 | 554351 | ks |
| TA-1 3/8" T | 130 | 250 | - | - | 25,0 | 23 | 12,5 | 11,0 | 56,2 | 7 | 58 | 74 | 115 | 143 | - | - | - | 140 | 120 | 554352 | ks |
| TA-1 1/2" S | 130 | 250 | 20,0 | - | - | 23 | 12,5 | 11,0 | 56,2 | 7 | 58 | 74 | 115 | 143 | - | - | - | 140 | 120 | 554353 | ks |
| TA-1 1/2" D | 130 | 250 | - | 20 | - | 23 | 12,5 | 11,0 | 56,2 | 7 | 58 | 74 | 115 | 143 | - | - | - | 140 | 120 | 554354 | ks |
| TA-1 1/2" T | 130 | 250 | - | - | 35,0 | 23 | 12,5 | 11,0 | 56,2 | 7 | 58 | 74 | 115 | 143 | - | - | - | 140 | 120 | 554355 | ks |
| TA-2 5/8" S | 180 | 420 | 22,0 | - | - | 28 | 15,0 | 12,5 | 70,5 | 9 | 70 | 87 | 128 | 164 | - | - | - | 140 | 140 | 554356 | ks |
| TA-2 5/8" D | 180 | 420 | - | 25 | - | 28 | 15,0 | 12,5 | 70,5 | 9 | 70 | 87 | 128 | 164 | - | - | - | 140 | 140 | 554357 | ks |
| TA-2 5/8" T | 180 | 420 | - | - | 41,5 | 28 | 15,0 | 12,5 | 70,5 | 9 | 70 | 87 | 128 | 164 | - | - | - | 140 | 140 | 554358 | ks |
| TA-2 3/4" S | 180 | 420 | 22,0 | - | - | 28 | 15,0 | 12,5 | 70,5 | 9 | 70 | 87 | 128 | 164 | - | - | - | 140 | 140 | 554359 | ks |
| TA-2 3/4" D | 180 | 420 | - | 30 | - | 28 | 15,0 | 12,5 | 70,5 | 9 | 70 | 87 | 128 | 164 | - | - | - | 140 | 140 | 554360 | ks |
| TA-2 3/4" T | 180 | 420 | - | - | 49,0 | 28 | 15,0 | 12,5 | 70,5 | 9 | 70 | 87 | 128 | 164 | - | - | - | 140 | 140 | 554361 | ks |
| TA-3 1" S | 300 | 650 | 25,0 | - | - | 33 | 17,5 | 14,5 | 82,0 | 9 | 86 | 104 | 145 | 187 | 21 | 35 | 70 | 140 | 160 | 554362 | ks |
| TA-3 1" D | 300 | 650 | - | 45 | - | 33 | 17,5 | 14,5 | 82,0 | 9 | 86 | 104 | 145 | 187 | 21 | 35 | 70 | 140 | 160 | 554363 | ks |
| TA-3 1" T | 300 | 650 | - | - | 78,0 | 33 | 17,5 | 14,5 | 82,0 | 9 | 86 | 104 | 145 | 187 | 21 | 35 | 70 | 140 | 160 | 554364 | ks |
| TA-3 1 1/4" S | 300 | 650 | 25,0 | - | - | 33 | 17,5 | 14,5 | 82,0 | 9 | 86 | 104 | 145 | 187 | 21 | 35 | 70 | 140 | 160 | 554365 | ks |
| TA-3 1 1/4" D | 300 | 650 | - | 54 | - | 33 | 17,5 | 14,5 | 82,0 | 9 | 86 | 104 | 145 | 187 | 21 | 35 | 70 | 140 | 160 | 554366 | ks |
| TA-3 1 1/4" T | 300 | 650 | - | - | 90,0 | 33 | 17,5 | 14,5 | 82,0 | 9 | 86 | 104 | 145 | 187 | 21 | 35 | 70 | 140 | 160 | 554367 | ks |
| TA-3 1 1/2" S | 300 | 650 | 25,0 | - | - | 33 | 17,5 | 14,5 | 82,0 | 9 | 86 | 104 | 145 | 187 | 21 | 35 | 70 | 140 | 160 | 554368 | ks |
| TA-3 1 1/2" D | 300 | 650 | - | 71 | - | 33 | 17,5 | 14,5 | 82,0 | 9 | 86 | 104 | 145 | 187 | 21 | 35 | 70 | 140 | 160 | 554369 | ks |
| TA-3 1 1/2" T | 300 | 650 | - | - | 119,0 | 33 | 17,5 | 14,5 | 82,0 | 9 | 86 | 104 | 145 | 187 | 21 | 35 | 70 | 140 | 160 | 554370 | ks |
| TA-3 1 3/4" S | 300 | 650 | 29,5 | - | - | 33 | 17,5 | 14,5 | 82,0 | 9 | 86 | 104 | 145 | 187 | 21 | 35 | 70 | 140 | 160 | 554371 | ks |

Poznámky k objednání

- všechny rozměry uvedeny v mm

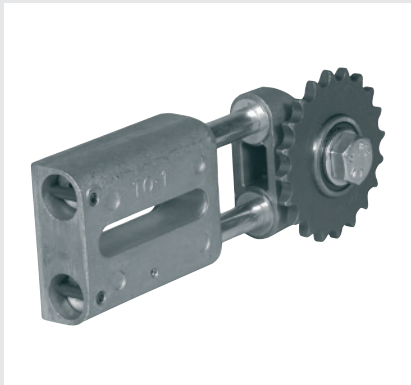
Kluzný napínák řetězů TA

S plastovým třmenem, pro 1-řadé, 2-řadé a 3-řadé válečkové řetězy



Napínák řetězů ETR

S řetězovým kolem, pro 1-řadé a 2-řadé válečkové řetězy



Poznámky

- použití automatického napínáku řetězů prodlužuje životnost řetězu a kompenzuje dopady prodlužování řetězu, současně tlumí vibrace a hluk
- napínák série ETR má dlouhou životnost a je vyroben z vysoce kvalitního materiálu
- určen pro pracovní teplotu max. 100 °C
- bezúdržbový
- změna napínací síly dle požadavku
- odolný vůči olejům a mazivům
- jednoduchá montáž a seřízení
- vhodné i pro reverzní pohony
- S = 1-řadý, D = 2-řadý

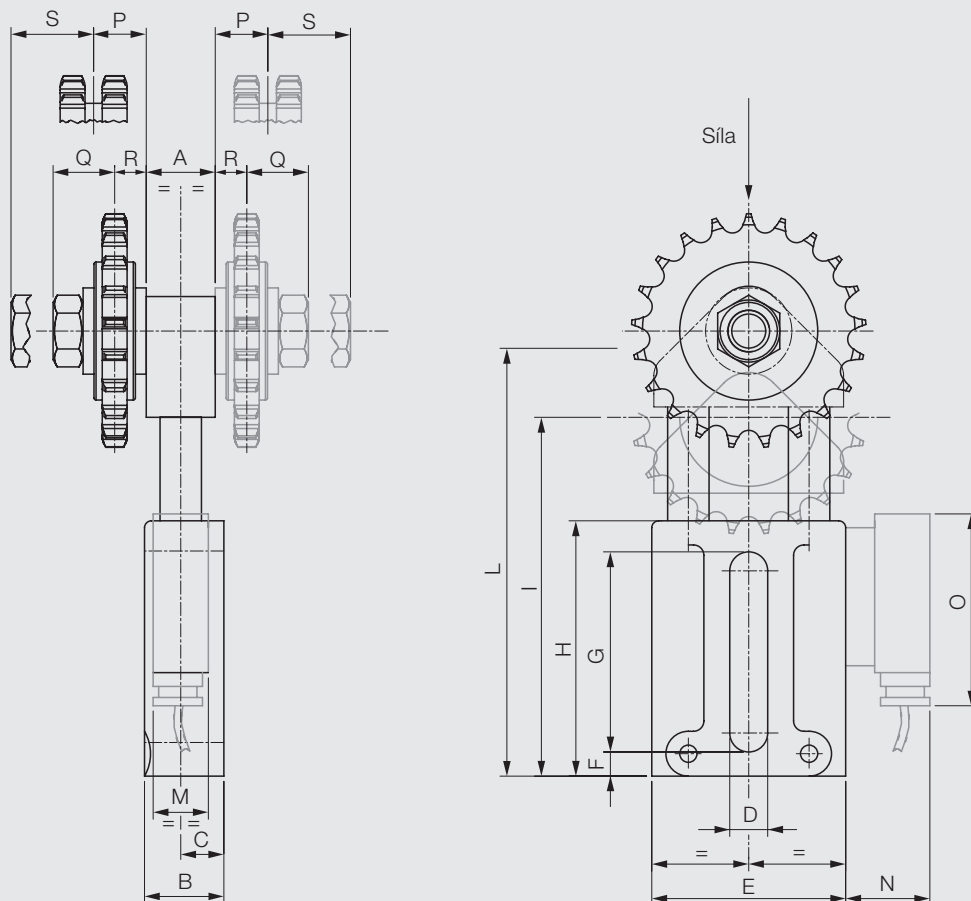
| Typ | Síla [N] | | A | B | C | D | E | F | G | H | I | L | M | N | O | P | Q | R | S | Obj. kód | Jedn. |
|-------------|----------|------|----|----|------|------|------|---|----|-----|-----|-----|----|----|----|------|------|-----|------|----------|-------|
| | min. | max. | | | | | | | | | | | | | | | | | | | |
| ETR1 3/8" S | 130 | 250 | 20 | 23 | 12,5 | 11,0 | 56,2 | 7 | 58 | 74 | 99 | 127 | - | - | - | - | 19,7 | 9,2 | - | 522170 | ks |
| ETR1 3/8" D | 130 | 250 | 20 | 23 | 12,5 | 11,0 | 56,2 | 7 | 58 | 74 | 99 | 127 | - | - | - | 11,0 | - | - | 18,0 | 554372 | ks |
| ETR1 1/2" S | 130 | 250 | 20 | 23 | 12,5 | 11,0 | 56,2 | 7 | 58 | 74 | 99 | 127 | - | - | - | - | 19,7 | 9,2 | - | 554373 | ks |
| ETR1 1/2" D | 130 | 250 | 20 | 23 | 12,5 | 11,0 | 56,2 | 7 | 58 | 74 | 99 | 127 | - | - | - | 12,5 | - | - | 16,5 | 554374 | ks |
| ETR2 5/8" S | 180 | 420 | 25 | 28 | 15,0 | 12,5 | 70,5 | 9 | 70 | 87 | 127 | 163 | - | - | - | - | 19,7 | 9,2 | - | 554375 | ks |
| ETR2 5/8" D | 180 | 420 | 25 | 28 | 15,0 | 12,5 | 70,5 | 9 | 70 | 87 | 127 | 163 | - | - | - | 15,3 | - | - | 21,8 | 554376 | ks |
| ETR2 3/4" S | 180 | 420 | 25 | 28 | 15,0 | 12,5 | 70,5 | 9 | 70 | 87 | 127 | 163 | - | - | - | - | 19,7 | 9,2 | - | 554377 | ks |
| ETR2 3/4" D | 180 | 420 | 25 | 28 | 15,0 | 12,5 | 70,5 | 9 | 70 | 87 | 127 | 163 | - | - | - | 17,7 | - | - | 19,4 | 554378 | ks |
| ETR3 1" S | 300 | 650 | 30 | 33 | 17,5 | 14,5 | 82,0 | 9 | 86 | 104 | 151 | 193 | 21 | 35 | 70 | - | 19,4 | 8,9 | - | 554379 | ks |
| ETR3 1" D | 300 | 650 | 30 | 33 | 17,5 | 14,5 | 82,0 | 9 | 86 | 104 | 151 | 193 | 21 | 35 | 70 | 26,4 | - | - | 26,4 | 554380 | ks |

Poznámky k objednání

- všechny rozměry uvedeny v mm

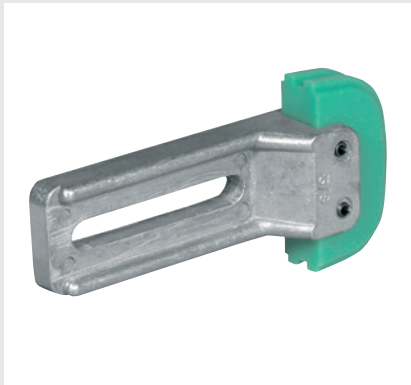
Napínák řetězů ETR

S řetězovým kolem, pro 1-řadé a 2-řadé válečkové řetězy



Kluzný napínák řetězů TF

S plastovým třmenem, pro 1-řadé a 2-řadé válečkové řetězy



Poznámky

- použití napínáku řetězů prodlužuje životnost řetězu a kompenzuje dopady prodlužování řetězu, současně tlumí vibrace a hluk
- třmen z plastu odolný vůči opotřebení s nižším součinitelem tření (dynamický součinitel tření μ 0,06 při použití nemazané oceli)
- určen pro pracovní teplotu max. 65 °C
- jednoduchá montáž a seřízení
- vhodné i pro reverzní pohony

- S = 1-řadý, D = 2-řadý

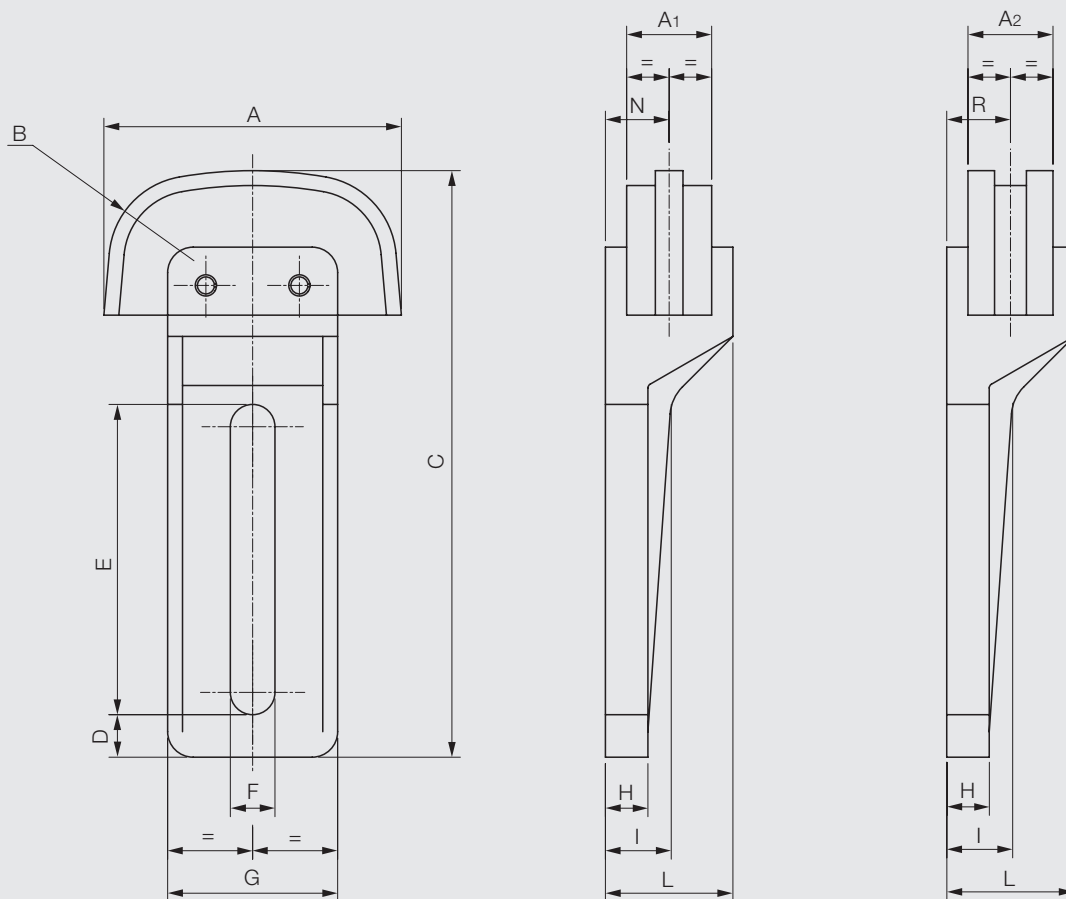
| Typ | A | B | C | D | E | F | G | H | I | L | N | Q | A ₁ | A ₂ | Obj. kód | Jedn. |
|---------------|-----|----|-----|----|----|------|----|----|----|----|----|-------|----------------|----------------|----------|-------|
| TF 1 3/8" S | 69 | 35 | 138 | 10 | 73 | 10,5 | 40 | 10 | 15 | 30 | 15 | - | 20 | - | 554382 | ks |
| TF 1 3/8" D | 69 | 35 | 138 | 10 | 73 | 10,5 | 40 | 10 | 15 | 30 | - | 15,00 | - | 20,0 | 554383 | ks |
| TF 1 1/2" S | 69 | 35 | 138 | 10 | 73 | 10,5 | 40 | 10 | 15 | 30 | 15 | - | 20 | - | 554385 | ks |
| TF 1 1/2" D | 69 | 35 | 138 | 10 | 73 | 10,5 | 40 | 10 | 15 | 30 | - | 15,25 | - | 20,5 | 554386 | ks |
| TF 2 5/8" S | 89 | 45 | 164 | 12 | 85 | 12,5 | 50 | 12 | 18 | 36 | 18 | - | 22 | - | 554388 | ks |
| TF 2 5/8" D | 89 | 45 | 164 | 12 | 85 | 12,5 | 50 | 12 | 18 | 36 | - | 19,50 | - | 25,0 | 554389 | ks |
| TF 2 3/4" S | 89 | 45 | 164 | 12 | 85 | 12,5 | 50 | 12 | 18 | 36 | 18 | - | 22 | - | 554391 | ks |
| TF 2 3/4" D | 89 | 45 | 164 | 12 | 85 | 12,5 | 50 | 12 | 18 | 36 | - | 21,75 | - | 29,5 | 554392 | ks |
| TF 3 1" S | 109 | 55 | 173 | 13 | 82 | 12,5 | 60 | 14 | 20 | 40 | 20 | - | 25 | - | 554394 | ks |
| TF 3 1" D | 109 | 55 | 173 | 13 | 82 | 12,5 | 60 | 14 | 20 | 40 | - | 30,50 | - | 46,0 | 554395 | ks |
| TF 3 1 1/4" S | 109 | 55 | 173 | 13 | 82 | 12,5 | 60 | 14 | 20 | 40 | 20 | - | 25 | - | 554397 | ks |
| TF 3 1 1/4" D | 109 | 55 | 173 | 13 | 82 | 12,5 | 60 | 14 | 20 | 40 | - | - | - | - | 554398 | ks |
| TF 3 1 1/2" D | 109 | 55 | 173 | 13 | 82 | 12,5 | 60 | 14 | 20 | 40 | - | - | - | - | 554400 | ks |

Poznámky k objednání

- všechny rozměry uvedeny v mm

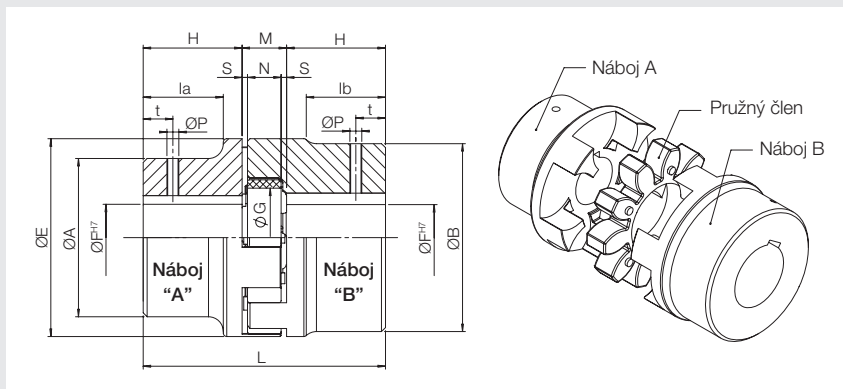
Kluzný napínák řetězů TF

S plastovým třmenem, pro 1-řadé a 2-řadé válečkové řetězy



Pružná spojka GRMP

S krátkým nábojem a hotovou dírou



Poznámky

- drážka pro pero dle DIN 6885/1 – tolerance Js9
- komplet spojky je složen ze dvou nábojů a pružného členu
- k dodání také v ocelovém provedení

Materiál

- náboj šedá litina EN-GJL-250, * slinutá ocel
- pružný člen polyuretan

| Velikost | Náboj A | | Náboj B | | E | H | L | M | S | N | G | t | P | Náboj A | Náboj B | Jedn. | |
|----------|-----------------|----|---------|----|---|----|----|----|----|-----|----|----|----|---------|----------|--------|----------|
| | F ^{H7} | A | la | B | | | | | | | | | | lb | Obj. kód | | Obj. kód |
| 19/24* | 10 | - | - | 40 | - | 40 | 25 | 66 | 16 | 2,0 | 12 | 18 | 10 | M5 | - | N07695 | ks |
| | 11 | - | - | 40 | - | 40 | 25 | 66 | 16 | 2,0 | 12 | 18 | 10 | M5 | - | N07696 | ks |
| | 12 | - | - | 40 | - | 40 | 25 | 66 | 16 | 2,0 | 12 | 18 | 10 | M5 | - | N07697 | ks |
| | 14 | - | - | 40 | - | 40 | 25 | 66 | 16 | 2,0 | 12 | 18 | 10 | M5 | - | N07698 | ks |
| | 15 | - | - | 40 | - | 40 | 25 | 66 | 16 | 2,0 | 12 | 18 | 10 | M5 | - | N07699 | ks |
| | 16 | - | - | 40 | - | 40 | 25 | 66 | 16 | 2,0 | 12 | 18 | 10 | M5 | - | N07700 | ks |
| | 18 | - | - | 40 | - | 40 | 25 | 66 | 16 | 2,0 | 12 | 18 | 10 | M5 | - | N07701 | ks |
| | 19 | - | - | 40 | - | 40 | 25 | 66 | 16 | 2,0 | 12 | 18 | 10 | M5 | - | N07702 | ks |
| | 20 | - | - | 40 | - | 40 | 25 | 66 | 16 | 2,0 | 12 | 18 | 10 | M5 | - | N07703 | ks |
| | 22 | - | - | 40 | - | 40 | 25 | 66 | 16 | 2,0 | 12 | 18 | 10 | M5 | - | N07704 | ks |
| | 24 | - | - | 40 | - | 40 | 25 | 66 | 16 | 2,0 | 12 | 18 | 10 | M5 | - | N07705 | ks |
| 24/32 | 14 | 40 | 24 | - | - | 55 | 30 | 78 | 18 | 2,0 | 14 | 27 | 10 | M5 | N07706 | - | ks |
| | 15 | 40 | 24 | - | - | 55 | 30 | 78 | 18 | 2,0 | 14 | 27 | 10 | M5 | N07707 | - | ks |
| | 16 | 40 | 24 | - | - | 55 | 30 | 78 | 18 | 2,0 | 14 | 27 | 10 | M5 | N07708 | - | ks |
| | 18 | 40 | 24 | - | - | 55 | 30 | 78 | 18 | 2,0 | 14 | 27 | 10 | M5 | N07709 | - | ks |
| | 19 | 40 | 24 | - | - | 55 | 30 | 78 | 18 | 2,0 | 14 | 27 | 10 | M5 | N07710 | - | ks |
| | 20 | 40 | 24 | - | - | 55 | 30 | 78 | 18 | 2,0 | 14 | 27 | 10 | M5 | N02961 | - | ks |
| | 22 | 40 | 24 | - | - | 55 | 30 | 78 | 18 | 2,0 | 14 | 27 | 10 | M5 | N07711 | - | ks |
| | 24 | 40 | 24 | 55 | - | 55 | 30 | 78 | 18 | 2,0 | 14 | 27 | 10 | M5 | N07712 | N07713 | ks |
| | 25 | - | - | 55 | - | 55 | 30 | 78 | 18 | 2,0 | 14 | 27 | 10 | M5 | - | N02962 | ks |
| | 28 | - | - | 55 | - | 55 | 30 | 78 | 18 | 2,0 | 14 | 27 | 10 | M5 | - | N07714 | ks |
| | 30 | - | - | 55 | - | 55 | 30 | 78 | 18 | 2,0 | 14 | 27 | 10 | M5 | - | N07715 | ks |
| | 32 | - | - | 55 | - | 55 | 30 | 78 | 18 | 2,0 | 14 | 27 | 10 | M5 | - | N07716 | ks |
| 28/38 | 14 | 48 | 28 | - | - | 65 | 35 | 90 | 20 | 2,5 | 15 | 30 | 15 | M6 | N02770 | - | ks |
| | 15 | 48 | 28 | - | - | 65 | 35 | 90 | 20 | 2,5 | 15 | 30 | 15 | M6 | N02771 | - | ks |
| | 16 | 48 | 28 | - | - | 65 | 35 | 90 | 20 | 2,5 | 15 | 30 | 15 | M6 | N02772 | - | ks |
| | 18 | 48 | 28 | - | - | 65 | 35 | 90 | 20 | 2,5 | 15 | 30 | 15 | M6 | N02773 | - | ks |
| | 19 | 48 | 28 | - | - | 65 | 35 | 90 | 20 | 2,5 | 15 | 30 | 15 | M6 | N02774 | - | ks |
| | 20 | 48 | 28 | - | - | 65 | 35 | 90 | 20 | 2,5 | 15 | 30 | 15 | M6 | N02949 | - | ks |
| | 22 | 48 | 28 | - | - | 65 | 35 | 90 | 20 | 2,5 | 15 | 30 | 15 | M6 | N02786 | - | ks |
| | 24 | 48 | 28 | - | - | 65 | 35 | 90 | 20 | 2,5 | 15 | 30 | 15 | M6 | N02787 | - | ks |
| | 25 | 48 | 28 | - | - | 65 | 35 | 90 | 20 | 2,5 | 15 | 30 | 15 | M6 | N02788 | - | ks |

| Velikost | Náboj A | | | Náboj B | | | E | H | L | M | S | N | G | t | P | Náboj A | Náboj B | Jedn. |
|----------|-----------------|-----|-----|---------|-----|----------|-----|-----|-----|-----|----|----|-----|-----|--------|----------|---------|-------|
| | F ^{H7} | A | la | B | lb | Obj. kód | | | | | | | | | | Obj. kód | | |
| 28/38 | 28 | 48 | 28 | - | - | 65 | 35 | 90 | 20 | 2,5 | 15 | 30 | 15 | M6 | N02789 | - | ks | |
| | 30 | - | - | 65 | - | 65 | 35 | 90 | 20 | 2,5 | 15 | 30 | 15 | M6 | - | N02790 | ks | |
| | 32 | - | - | 65 | - | 65 | 35 | 90 | 20 | 2,5 | 15 | 30 | 15 | M6 | - | N02791 | ks | |
| | 35 | - | - | 65 | - | 65 | 35 | 90 | 20 | 2,5 | 15 | 30 | 15 | M6 | - | N02792 | ks | |
| | 38 | - | - | 65 | - | 65 | 35 | 90 | 20 | 2,5 | 15 | 30 | 15 | M6 | - | N02793 | ks | |
| 38/45 | 22 | 66 | 37 | - | - | 80 | 45 | 114 | 24 | 3,0 | 18 | 38 | 15 | M8 | N06277 | - | ks | |
| | 24 | 66 | 37 | - | - | 80 | 45 | 114 | 24 | 3,0 | 18 | 38 | 15 | M8 | N06278 | - | ks | |
| | 25 | 66 | 37 | - | - | 80 | 45 | 114 | 24 | 3,0 | 18 | 38 | 15 | M8 | N06279 | - | ks | |
| | 28 | 66 | 37 | - | - | 80 | 45 | 114 | 24 | 3,0 | 18 | 38 | 15 | M8 | N06280 | - | ks | |
| | 30 | 66 | 37 | - | - | 80 | 45 | 114 | 24 | 3,0 | 18 | 38 | 15 | M8 | N06281 | - | ks | |
| | 32 | 66 | 37 | - | - | 80 | 45 | 114 | 24 | 3,0 | 18 | 38 | 15 | M8 | N06282 | - | ks | |
| | 35 | 66 | 37 | - | - | 80 | 45 | 114 | 24 | 3,0 | 18 | 38 | 15 | M8 | N06283 | - | ks | |
| | 38 | 66 | 37 | - | - | 80 | 45 | 114 | 24 | 3,0 | 18 | 38 | 15 | M8 | N06284 | - | ks | |
| | 40 | - | - | 80 | - | 80 | 45 | 114 | 24 | 3,0 | 18 | 38 | 15 | M8 | - | N06285 | ks | |
| | 42 | - | - | 80 | - | 80 | 45 | 114 | 24 | 3,0 | 18 | 38 | 15 | M8 | - | N06286 | ks | |
| | 45 | - | - | 80 | - | 80 | 45 | 114 | 24 | 3,0 | 18 | 38 | 15 | M8 | - | N06287 | ks | |
| 42/55 | 24 | 75 | 40 | - | - | 95 | 50 | 126 | 26 | 3,0 | 20 | 46 | 20 | M8 | N06288 | - | ks | |
| | 25 | 75 | 40 | - | - | 95 | 50 | 126 | 26 | 3,0 | 20 | 46 | 20 | M8 | N06289 | - | ks | |
| | 28 | 75 | 40 | - | - | 95 | 50 | 126 | 26 | 3,0 | 20 | 46 | 20 | M8 | N06290 | - | ks | |
| | 30 | 75 | 40 | - | - | 95 | 50 | 126 | 26 | 3,0 | 20 | 46 | 20 | M8 | N06291 | - | ks | |
| | 32 | 75 | 40 | - | - | 95 | 50 | 126 | 26 | 3,0 | 20 | 46 | 20 | M8 | N06292 | - | ks | |
| | 35 | 75 | 40 | - | - | 95 | 50 | 126 | 26 | 3,0 | 20 | 46 | 20 | M8 | N06293 | - | ks | |
| | 38 | 75 | 40 | - | - | 95 | 50 | 126 | 26 | 3,0 | 20 | 46 | 20 | M8 | N06294 | - | ks | |
| | 40 | 75 | 40 | - | - | 95 | 50 | 126 | 26 | 3,0 | 20 | 46 | 20 | M8 | N06295 | - | ks | |
| | 42 | 75 | 40 | 95 | - | 95 | 50 | 126 | 26 | 3,0 | 20 | 46 | 20 | M8 | N06296 | N06297 | ks | |
| | 45 | - | - | 95 | - | 95 | 50 | 126 | 26 | 3,0 | 20 | 46 | 20 | M8 | - | N06298 | ks | |
| | 48 | - | - | 95 | - | 95 | 50 | 126 | 26 | 3,0 | 20 | 46 | 20 | M8 | - | N06299 | ks | |
| | 50 | - | - | 95 | - | 95 | 50 | 126 | 26 | 3,0 | 20 | 46 | 20 | M8 | - | N06300 | ks | |
| | 55 | - | - | 95 | - | 95 | 50 | 126 | 26 | 3,0 | 20 | 46 | 20 | M8 | - | N06301 | ks | |
| 48/60 | 30 | 85 | 45 | - | - | 105 | 56 | 140 | 28 | 3,5 | 21 | 51 | 20 | M8 | N06266 | - | ks | |
| | 32 | 85 | 45 | - | - | 105 | 56 | 140 | 28 | 3,5 | 21 | 51 | 20 | M8 | N06267 | - | ks | |
| | 35 | 85 | 45 | - | - | 105 | 56 | 140 | 28 | 3,5 | 21 | 51 | 20 | M8 | N06268 | - | ks | |
| | 38 | 85 | 45 | - | - | 105 | 56 | 140 | 28 | 3,5 | 21 | 51 | 20 | M8 | N06269 | - | ks | |
| | 40 | 85 | 45 | - | - | 105 | 56 | 140 | 28 | 3,5 | 21 | 51 | 20 | M8 | N06270 | - | ks | |
| | 42 | 85 | 45 | - | - | 105 | 56 | 140 | 28 | 3,5 | 21 | 51 | 20 | M8 | N02950 | - | ks | |
| | 45 | 85 | 45 | - | - | 105 | 56 | 140 | 28 | 3,5 | 21 | 51 | 20 | M8 | N06272 | - | ks | |
| | 48 | 85 | 45 | - | - | 105 | 56 | 140 | 28 | 3,5 | 21 | 51 | 20 | M8 | N06273 | - | ks | |
| | 50 | - | - | 105 | - | 105 | 56 | 140 | 28 | 3,5 | 21 | 51 | 20 | M8 | - | N06274 | ks | |
| | 55 | - | - | 105 | - | 105 | 56 | 140 | 28 | 3,5 | 21 | 51 | 20 | M8 | - | N06275 | ks | |
| | 60 | - | - | 105 | - | 105 | 56 | 140 | 28 | 3,5 | 21 | 51 | 20 | M8 | - | N06276 | ks | |
| 55/70 | 30 | 98 | 52 | - | - | 120 | 65 | 160 | 30 | 4,0 | 22 | 60 | 20 | M10 | N07738 | - | ks | |
| | 32 | 98 | 52 | - | - | 120 | 65 | 160 | 30 | 4,0 | 22 | 60 | 20 | M10 | N07739 | - | ks | |
| | 35 | 98 | 52 | - | - | 120 | 65 | 160 | 30 | 4,0 | 22 | 60 | 20 | M10 | N07740 | - | ks | |
| | 38 | 98 | 52 | - | - | 120 | 65 | 160 | 30 | 4,0 | 22 | 60 | 20 | M10 | N07741 | - | ks | |
| | 40 | 98 | 52 | - | - | 120 | 65 | 160 | 30 | 4,0 | 22 | 60 | 20 | M10 | N07742 | - | ks | |
| | 42 | 98 | 52 | - | - | 120 | 65 | 160 | 30 | 4,0 | 22 | 60 | 20 | M10 | N07743 | - | ks | |
| | 45 | 98 | 52 | - | - | 120 | 65 | 160 | 30 | 4,0 | 22 | 60 | 20 | M10 | N07744 | - | ks | |
| | 48 | 98 | 52 | - | - | 120 | 65 | 160 | 30 | 4,0 | 22 | 60 | 20 | M10 | N07745 | - | ks | |
| | 50 | 98 | 52 | - | - | 120 | 65 | 160 | 30 | 4,0 | 22 | 60 | 20 | M10 | N07746 | - | ks | |
| | 55 | 98 | 52 | - | - | 120 | 65 | 160 | 30 | 4,0 | 22 | 60 | 20 | M10 | N07747 | - | ks | |
| | 60 | - | - | 120 | - | 120 | 65 | 160 | 30 | 4,0 | 22 | 60 | 20 | M10 | - | N07748 | ks | |
| 65 | - | - | 120 | - | 120 | 65 | 160 | 30 | 4,0 | 22 | 60 | 20 | M10 | - | N07749 | ks | | |
| 70 | - | - | 120 | - | 120 | 65 | 160 | 30 | 4,0 | 22 | 60 | 20 | M10 | - | N07750 | ks | | |
| 65/75 | 40 | 115 | 61 | - | - | 135 | 75 | 185 | 35 | 4,5 | 26 | 68 | 20 | M10 | N07751 | - | ks | |
| | 45 | 115 | 61 | - | - | 135 | 75 | 185 | 35 | 4,5 | 26 | 68 | 20 | M10 | N07752 | - | ks | |
| | 48 | 115 | 61 | - | - | 135 | 75 | 185 | 35 | 4,5 | 26 | 68 | 20 | M10 | N07753 | - | ks | |

Pokračování na další straně

| Velikost | Náboj A | | | Náboj B | | | E | H | L | M | S | N | G | t | P | Náboj A | Náboj B | Jedn. |
|----------|-----------------|-----|----|---------|----|----------|-----|-----|-----|-----|-----|-----|----|-----|--------|----------|---------|-------|
| | F ^{H7} | A | la | B | lb | Obj. kód | | | | | | | | | | Obj. kód | | |
| 65/75 | 50 | 115 | 61 | - | - | 135 | 75 | 185 | 35 | 4,5 | 26 | 68 | 20 | M10 | N07754 | - | ks | |
| | 55 | 115 | 61 | - | - | 135 | 75 | 185 | 35 | 4,5 | 26 | 68 | 20 | M10 | N07755 | - | ks | |
| | 60 | 115 | 61 | - | - | 135 | 75 | 185 | 35 | 4,5 | 26 | 68 | 20 | M10 | N07756 | - | ks | |
| | 65 | 115 | 61 | - | - | 135 | 75 | 185 | 35 | 4,5 | 26 | 68 | 20 | M10 | N07757 | - | ks | |
| | 75 | - | - | 135 | - | - | 135 | 75 | 185 | 35 | 4,5 | 26 | 68 | 20 | M10 | - | N07758 | ks |
| 75/90 | 45 | 135 | 69 | - | - | 160 | 85 | 210 | 40 | 5,0 | 30 | 80 | 25 | M10 | N07759 | - | ks | |
| | 48 | 135 | 69 | - | - | 160 | 85 | 210 | 40 | 5,0 | 30 | 80 | 25 | M10 | N07760 | - | ks | |
| | 50 | 135 | 69 | - | - | 160 | 85 | 210 | 40 | 5,0 | 30 | 80 | 25 | M10 | N07761 | - | ks | |
| | 55 | 135 | 69 | - | - | 160 | 85 | 210 | 40 | 5,0 | 30 | 80 | 25 | M10 | N07762 | - | ks | |
| | 60 | 135 | 69 | - | - | 160 | 85 | 210 | 40 | 5,0 | 30 | 80 | 25 | M10 | N07763 | - | ks | |
| | 65 | 135 | 69 | - | - | 160 | 85 | 210 | 40 | 5,0 | 30 | 80 | 25 | M10 | N07764 | - | ks | |
| | 70 | 135 | 69 | 160 | - | 160 | 85 | 210 | 40 | 5,0 | 30 | 80 | 25 | M10 | N07765 | N07767 | ks | |
| | 75 | 135 | 69 | 160 | - | 160 | 85 | 210 | 40 | 5,0 | 30 | 80 | 25 | M10 | N07766 | N07768 | ks | |
| | 80 | - | - | 160 | - | 160 | 85 | 210 | 40 | 5,0 | 30 | 80 | 25 | M10 | - | N07769 | ks | |
| | 85 | - | - | 160 | - | 160 | 85 | 210 | 40 | 5,0 | 30 | 80 | 25 | M10 | - | N07770 | ks | |
| | 90 | - | - | 160 | - | 160 | 85 | 210 | 40 | 5,0 | 30 | 80 | 25 | M10 | - | N07771 | ks | |
| 90/100 | 50 | 160 | 81 | - | - | 200 | 100 | 245 | 45 | 5,5 | 34 | 100 | 30 | M12 | N07772 | - | ks | |
| | 55 | 160 | 81 | - | - | 200 | 100 | 245 | 45 | 5,5 | 34 | 100 | 30 | M12 | N07773 | - | ks | |
| | 60 | 160 | 81 | - | - | 200 | 100 | 245 | 45 | 5,5 | 34 | 100 | 30 | M12 | N07774 | - | ks | |
| | 65 | 160 | 81 | - | - | 200 | 100 | 245 | 45 | 5,5 | 34 | 100 | 30 | M12 | N07775 | - | ks | |
| | 70 | 160 | 81 | - | - | 200 | 100 | 245 | 45 | 5,5 | 34 | 100 | 30 | M12 | N07776 | - | ks | |
| | 75 | 160 | 81 | - | - | 200 | 100 | 245 | 45 | 5,5 | 34 | 100 | 30 | M12 | N07777 | - | ks | |
| | 80 | 160 | 81 | - | - | 200 | 100 | 245 | 45 | 5,5 | 34 | 100 | 30 | M12 | N07778 | - | ks | |
| | 85 | 160 | 81 | - | - | 200 | 100 | 245 | 45 | 5,5 | 34 | 100 | 30 | M12 | N07779 | - | ks | |
| | 90 | 160 | 81 | - | - | 200 | 100 | 245 | 45 | 5,5 | 34 | 100 | 30 | M12 | N07780 | - | ks | |
| | 95 | - | - | 180 | 81 | 200 | 100 | 245 | 45 | 5,5 | 34 | 100 | 30 | M12 | - | N07781 | ks | |
| | 100 | - | - | 180 | 81 | 200 | 100 | 245 | 45 | 5,5 | 34 | 100 | 30 | M12 | - | N07782 | ks | |

Poznámky k objednávani

- všechny rozměry uvedeny v mm



**Příslušenství
Pružný člen AR**

Pro pružnou spojku GRMP

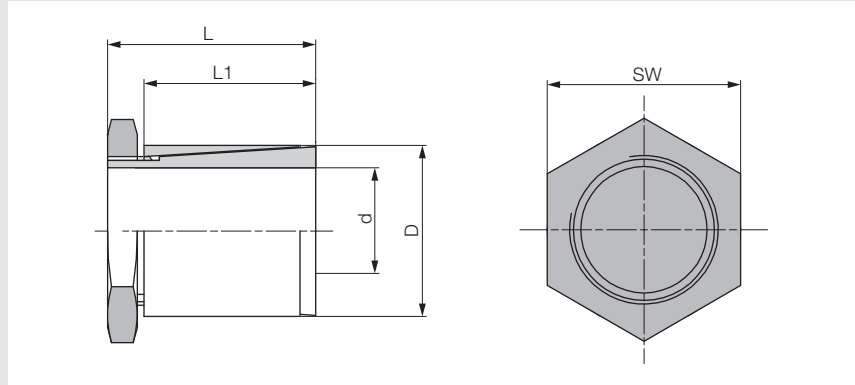
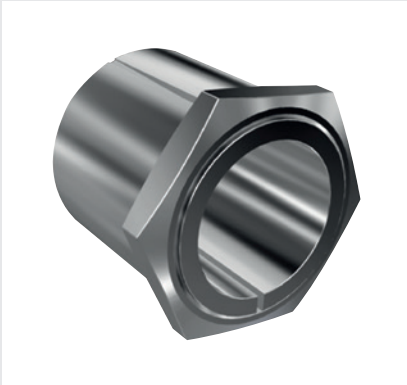
Materiál

- žlutý/černý polyuretan (92 Shore A)
- červený polyuretan (98 Shore A)
- zelený polyuretan (64 Shore D)

| Velikost | Žlutý/Černý Obj. kód | Červený Obj. kód | Zelený Obj. kód | Jedn. |
|----------|-------------------------|---------------------|--------------------|-------|
| 19/24 | T45324 | 492072 | N00351 | ks |
| 24/32 | T45325 | 553664 | N00352 | ks |
| 28/38 | T45326 | 320446 | N00353 | ks |
| 38/45 | T45327 | 553667 | N00354 | ks |
| 42/55 | T45328 | 553669 | F15336 | ks |
| 48/60 | T45329 | 553671 | N00355 | ks |
| 55/70 | T45330 | 553673 | N00356 | ks |
| 65/75 | T45331 | 553675 | N00357 | ks |
| 75/90 | T45332 | 553676 | N05362 | ks |
| 90/100 | 487532 | 553677 | N05363 | ks |

Svěrné upínací pouzdro nerezové BK 10

Samostředící



Materiál

- nerezová ocel

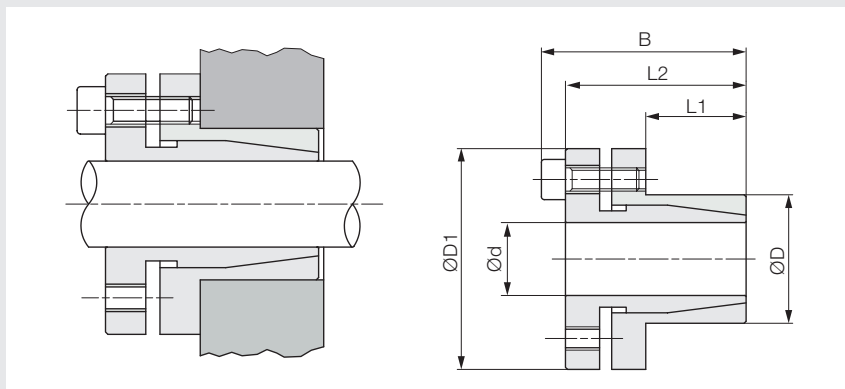
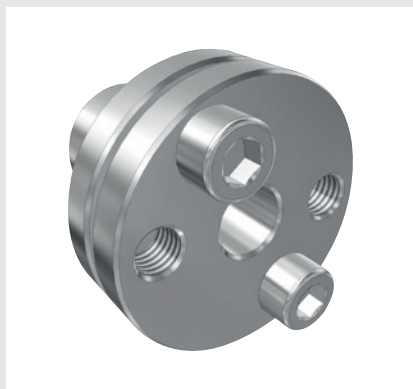
| d x D | SW | L | L1 | Dosažitelné při utahov. momentu | | Typ kroužku | Utahovací moment [Nm] | Obj. kód | Jedn. |
|------------|----|----|----|---------------------------------|--|-------------|-----------------------|----------|-------|
| | | | | Krouticí moment [Nm] | | | | | |
| 4 x 8 | 8 | 15 | 13 | 3 | | M6 x 0,5 | 4 | N08204 | ks |
| 5 x 10 | 10 | 15 | 13 | 4 | | M8 x 0,5 | 5 | N08205 | ks |
| 6 x 10 | 10 | 15 | 13 | 7 | | M8 x 0,5 | 8 | N08206 | ks |
| 6,35 x 10 | 10 | 15 | 13 | 7 | | M8 x 0,5 | 8 | N08207 | ks |
| 7 x 12 | 12 | 15 | 12 | 8 | | M10 x 0,75 | 9 | N08208 | ks |
| 8 x 14 | 16 | 22 | 19 | 14 | | M12 x 1 | 15 | N08209 | ks |
| 9 x 14 | 16 | 22 | 19 | 14 | | M12 x 1 | 15 | N08210 | ks |
| 9,53 x 14 | 16 | 22 | 19 | 14 | | M12 x 1 | 15 | N08211 | ks |
| 10 x 17 | 18 | 22 | 19 | 18 | | M15 x 1 | 19 | N08212 | ks |
| 11 x 17 | 18 | 22 | 19 | 18 | | M15 x 1 | 19 | N08213 | ks |
| 12 x 17 | 18 | 22 | 19 | 18 | | M15 x 1 | 19 | N08214 | ks |
| 14 x 20 | 20 | 28 | 23 | 24 | | M17 x 1 | 25 | N08215 | ks |
| 15 x 20 | 20 | 28 | 23 | 24 | | M17 x 1 | 25 | N08216 | ks |
| 15,88 x 23 | 26 | 28 | 23 | 26 | | M20 x 1 | 27 | N08217 | ks |
| 16 x 23 | 26 | 28 | 23 | 26 | | M20 x 1 | 27 | N08218 | ks |
| 17 x 23 | 26 | 28 | 23 | 26 | | M20 x 1 | 27 | N08066 | ks |
| 19 x 25 | 27 | 28 | 23 | 29 | | M22 x 1 | 30 | N08219 | ks |
| 20 x 28 | 30 | 28 | 23 | 31 | | M25 x 1 | 32 | N08220 | ks |

Poznámky k objednání

- všechny rozměry uvedeny v mm

Svěrné upínací pouzdro nerezové BK 30

Samostředící



Materiál

- nerezová ocel

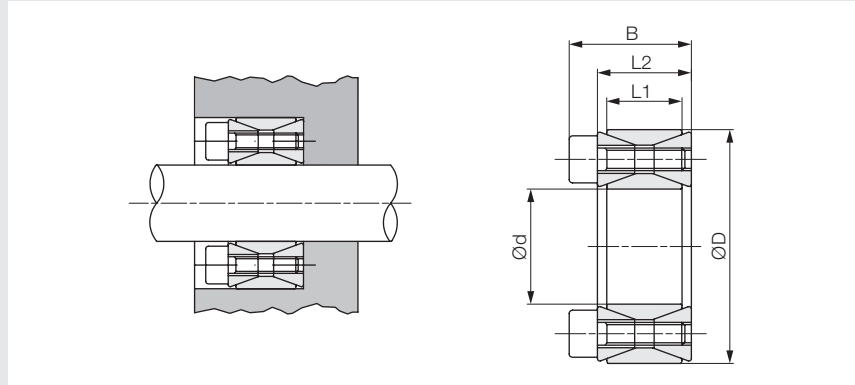
| d x D | L1 | L2 | B | D1 | Dosažitelné při utahov. momentu | | Upínací šrouby | | | Obj. kód | Jedn. |
|---------|----|------|------|----|---------------------------------|-------------------|----------------|--------------|-----------------------|----------|-------|
| | | | | | Krouticí moment [Nm] | Axiální síla [kN] | Počet | DIN 912-12.9 | Utahovací moment [Nm] | | |
| 6 x 14 | 10 | 19,0 | 22,0 | 25 | 5 | 1,7 | 3 | M3 | 1,2 | N08221 | ks |
| 8 x 15 | 12 | 21,5 | 25,5 | 27 | 17 | 4,4 | 3 | M4 | 2,7 | N08222 | ks |
| 10 x 16 | 14 | 24,0 | 28,0 | 28 | 23 | 4,4 | 3 | M4 | 2,7 | N08223 | ks |
| 12 x 18 | 14 | 25,5 | 29,5 | 30 | 27 | 4,4 | 3 | M4 | 2,7 | N08224 | ks |
| 14 x 22 | 15 | 27,5 | 31,5 | 35 | 48 | 6,5 | 4 | M4 | 2,7 | N08225 | ks |

Poznámky k objednávce

- všechny rozměry uvedeny v mm

Svěrné upínací pouzdro nerezové BK 40

Nesamostředící



Materiál

- nerezová ocel

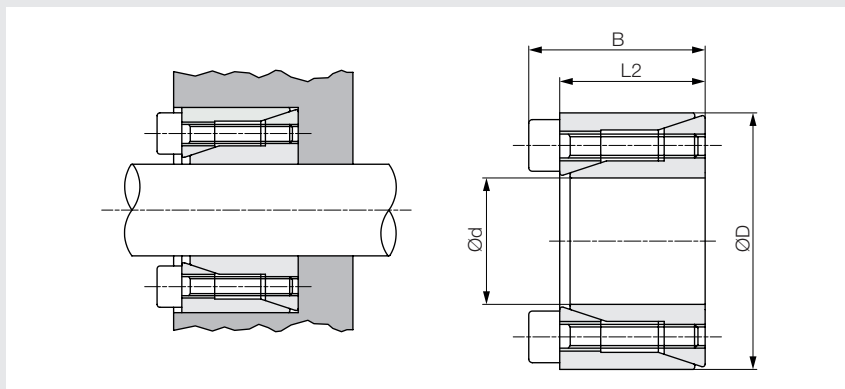
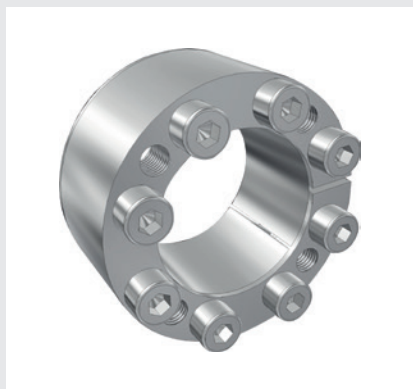
| d x D | L1 | L2 | B | Dosažitelné při utahov. momentu | | Měrný tlak | | Upínací šrouby | | | | |
|---------|----|----|----|---------------------------------|-------------------|-----------------------------|----------------------------|----------------|--------------|-----------------------|----------|-------|
| | | | | Krouticí moment [Nm] | Axiální síla [kN] | Hřídel [N/mm ²] | Náboj [N/mm ²] | Počet | DIN 912-12.9 | Utahovací moment [Nm] | Obj. kód | Jedn. |
| 20 x 47 | 17 | 20 | 26 | 110 | 11 | 133 | 57 | 8 | M6 x 18 | 8 | N08226 | ks |
| 22 x 47 | 17 | 20 | 26 | 120 | 11 | 121 | 57 | 8 | M6 x 18 | 8 | N08227 | ks |
| 24 x 50 | 17 | 20 | 26 | 150 | 12 | 125 | 60 | 9 | M6 x 18 | 8 | N08228 | ks |
| 25 x 50 | 17 | 20 | 26 | 155 | 12 | 120 | 60 | 9 | M6 x 18 | 8 | N08229 | ks |
| 28 x 55 | 17 | 20 | 26 | 170 | 12 | 107 | 55 | 9 | M6 x 18 | 8 | N08230 | ks |
| 30 x 55 | 17 | 20 | 26 | 185 | 12 | 100 | 55 | 9 | M6 x 18 | 8 | N08231 | ks |
| 32 x 60 | 17 | 20 | 26 | 265 | 16 | 125 | 66 | 12 | M6 x 18 | 8 | N08232 | ks |
| 35 x 60 | 17 | 20 | 26 | 290 | 16 | 114 | 67 | 12 | M6 x 18 | 8 | N08233 | ks |
| 38 x 65 | 17 | 20 | 26 | 390 | 20 | 131 | 77 | 15 | M6 x 18 | 8 | N08234 | ks |
| 40 x 65 | 17 | 20 | 26 | 410 | 20 | 125 | 77 | 15 | M6 x 18 | 8 | N08235 | ks |
| 42 x 75 | 20 | 24 | 32 | 595 | 20 | 138 | 78 | 12 | M8 x 22 | 18 | N08236 | ks |
| 45 x 75 | 20 | 24 | 32 | 635 | 28 | 129 | 78 | 12 | M8 x 22 | 18 | N08237 | ks |
| 48 x 80 | 20 | 24 | 32 | 680 | 28 | 121 | 73 | 12 | M8 x 22 | 18 | N08238 | ks |
| 50 x 80 | 20 | 24 | 32 | 700 | 28 | 116 | 73 | 12 | M8 x 22 | 18 | N08239 | ks |

Poznámky k objednávce

- všechny rozměry uvedeny v mm

Svěrné upínací pouzdro nerezové BK 61

Nesamostředící



Materiál

- nerezová ocel

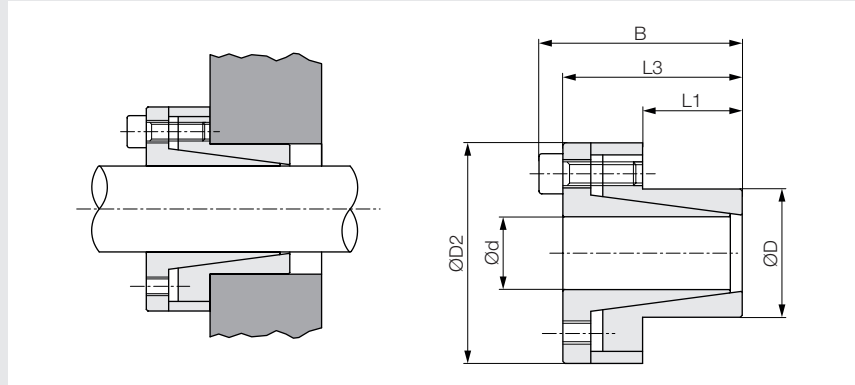
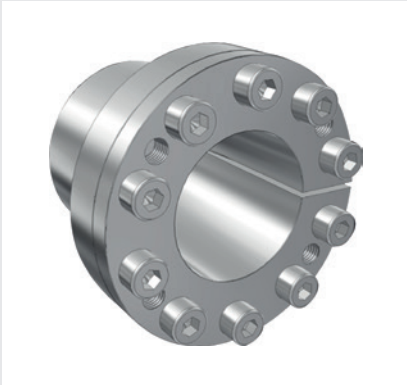
| d x D | L2 | B | Dosažitelné při utahov. momentu | | Měrný tlak | | Upínací šrouby | | | Obj. kód | Jedn. |
|---------|------|------|---------------------------------|-------------------|-----------------------------|----------------------------|----------------|-----------------------|-------|----------|-------|
| | | | Krouticí moment [Nm] | Axiální síla [kN] | Hřídel [N/mm ²] | Náboj [N/mm ²] | DIN 912-12.9 | Utahovací moment [Nm] | Počet | | |
| 6 x 16 | 11,0 | 13,5 | 3 | 0,9 | 49 | 19 | 3 | M2,5 x 10 | 1 | N08240 | ks |
| 7 x 17 | 11,0 | 13,5 | 3 | 0,9 | 42 | 17 | 3 | M2,5 x 10 | 1 | N08241 | ks |
| 8 x 18 | 11,0 | 13,5 | 4 | 0,9 | 37 | 17 | 3 | M2,5 x 10 | 1 | N08242 | ks |
| 9 x 20 | 13,0 | 15,5 | 6 | 1,2 | 37 | 17 | 4 | M2,5 x 12 | 1 | N08243 | ks |
| 10 x 20 | 13,0 | 15,5 | 6 | 1,2 | 33 | 17 | 4 | M2,5 x 12 | 1 | N08244 | ks |
| 12 x 22 | 13,0 | 15,5 | 7 | 1,2 | 26 | 15 | 4 | M2,5 x 12 | 1 | N08067 | ks |
| 14 x 26 | 17,0 | 20,0 | 13 | 1,9 | 28 | 15 | 4 | M3 x 16 | 1 | N08245 | ks |
| 15 x 28 | 17,0 | 20,0 | 14 | 1,9 | 26 | 14 | 4 | M3 x 16 | 1 | N08246 | ks |
| 16 x 32 | 17,0 | 21,0 | 28 | 3,5 | 45 | 23 | 4 | M4 x 16 | 2 | N08071 | ks |
| 17 x 35 | 21,0 | 25,0 | 30 | 3,5 | 34 | 17 | 4 | M4 x 20 | 2 | N08247 | ks |
| 18 x 35 | 21,0 | 25,0 | 32 | 3,5 | 32 | 17 | 4 | M4 x 20 | 2 | N08248 | ks |
| 19 x 35 | 21,0 | 25,0 | 34 | 3,5 | 31 | 17 | 4 | M4 x 20 | 2 | N08249 | ks |
| 20 x 38 | 21,0 | 26,0 | 55 | 5,5 | 45 | 24 | 4 | M5 x 20 | 4 | N08072 | ks |
| 22 x 40 | 21,0 | 26,0 | 61 | 5,5 | 41 | 23 | 4 | M5 x 20 | 4 | N08250 | ks |
| 24 x 47 | 26,0 | 32,0 | 96 | 8,0 | 44 | 23 | 4 | M6 x 24 | 7 | N08251 | ks |
| 25 x 47 | 26,0 | 32,0 | 100 | 8,0 | 43 | 23 | 4 | M6 x 24 | 7 | N08252 | ks |
| 28 x 50 | 26,0 | 32,0 | 210 | 15,0 | 57 | 32 | 6 | M6 x 24 | 7 | N08253 | ks |
| 30 x 55 | 26,0 | 32,0 | 220 | 15,0 | 54 | 29 | 6 | M6 x 24 | 7 | N08254 | ks |
| 32 x 55 | 26,0 | 32,0 | 240 | 15,0 | 50 | 29 | 6 | M6 x 24 | 7 | N08255 | ks |
| 35 x 60 | 29,0 | 35,0 | 350 | 20,0 | 55 | 32 | 6 | M6 x 28 | 7 | N08256 | ks |
| 38 x 65 | 29,0 | 35,0 | 380 | 20,0 | 51 | 29 | 6 | M6 x 28 | 7 | N08257 | ks |
| 40 x 65 | 29,0 | 35,0 | 400 | 20,0 | 48 | 29 | 6 | M6 x 28 | 7 | N08258 | ks |

Poznámky k objednávce

- všechny rozměry uvedeny v mm

Svěrné upínací pouzdro nerezové BK 80

Nesamostředící



Materiál

- nerezová ocel

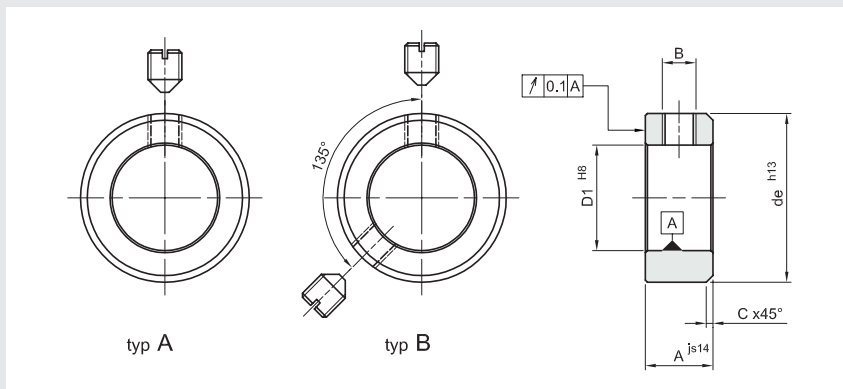
| d x D | L1 | L3 | B | D2 | Dosažitelné při utahov. momentu | | Měrný tlak | | Upínací šrouby | | | Obj. kód | Jedn. |
|---------|----|----|----|----|---------------------------------|-------------------|-----------------------------|----------------------------|----------------|-----------------------|-------|----------|-------|
| | | | | | Krouticí moment [Nm] | Axiální síla [kN] | Hřídel [N/mm ²] | Náboj [N/mm ²] | DIN 912-12.9 | Uťahovací moment [Nm] | Počet | | |
| 10 x 16 | 14 | 27 | 31 | 29 | 22 | 4 | 82 | 51 | 4 | M4 x 12 | 2 | N08259 | ks |
| 12 x 18 | 14 | 28 | 32 | 32 | 26 | 4 | 69 | 46 | 4 | M4 x 12 | 2 | N08260 | ks |
| 14 x 23 | 14 | 28 | 32 | 38 | 30 | 4 | 59 | 36 | 4 | M4 x 12 | 2 | N08261 | ks |
| 15 x 24 | 16 | 37 | 43 | 44 | 73 | 10 | 107 | 67 | 4 | M6 x 18 | 8 | N08262 | ks |
| 16 x 24 | 16 | 37 | 43 | 44 | 78 | 10 | 101 | 67 | 4 | M6 x 18 | 8 | N08040 | ks |
| 18 x 26 | 18 | 39 | 45 | 47 | 87 | 10 | 79 | 55 | 4 | M6 x 18 | 8 | N08263 | ks |
| 19 x 27 | 18 | 39 | 45 | 49 | 92 | 10 | 75 | 53 | 4 | M6 x 18 | 8 | N08264 | ks |
| 20 x 28 | 18 | 39 | 45 | 50 | 97 | 10 | 71 | 51 | 4 | M6 x 18 | 8 | N08265 | ks |
| 22 x 32 | 25 | 46 | 52 | 54 | 105 | 10 | 47 | 32 | 4 | M6 x 18 | 8 | N08266 | ks |
| 24 x 34 | 25 | 46 | 52 | 56 | 175 | 15 | 64 | 45 | 6 | M6 x 18 | 8 | N08267 | ks |
| 25 x 34 | 25 | 46 | 52 | 56 | 180 | 15 | 62 | 45 | 6 | M6 x 18 | 8 | N08268 | ks |
| 28 x 39 | 25 | 46 | 52 | 61 | 200 | 15 | 55 | 40 | 6 | M6 x 18 | 8 | N08269 | ks |
| 30 x 41 | 25 | 46 | 52 | 62 | 220 | 15 | 51 | 38 | 6 | M6 x 18 | 8 | N08270 | ks |
| 32 x 43 | 25 | 46 | 52 | 65 | 310 | 19 | 64 | 48 | 8 | M6 x 18 | 8 | N08271 | ks |
| 35 x 47 | 32 | 53 | 59 | 66 | 340 | 19 | 46 | 34 | 8 | M6 x 18 | 8 | N08272 | ks |
| 38 x 50 | 32 | 53 | 59 | 72 | 370 | 19 | 42 | 32 | 8 | M6 x 18 | 8 | N08273 | ks |
| 40 x 53 | 32 | 53 | 59 | 75 | 390 | 19 | 40 | 30 | 8 | M6 x 18 | 8 | N08274 | ks |
| 42 x 55 | 32 | 53 | 59 | 78 | 410 | 19 | 39 | 29 | 8 | M6 x 18 | 8 | N08275 | ks |
| 45 x 59 | 45 | 70 | 78 | 86 | 820 | 36 | 48 | 36 | 8 | M8 x 22 | 18 | N08276 | ks |
| 48 x 62 | 45 | 70 | 78 | 87 | 880 | 36 | 45 | 35 | 8 | M8 x 22 | 18 | N08277 | ks |
| 50 x 65 | 45 | 70 | 78 | 92 | 910 | 36 | 43 | 33 | 8 | M8 x 22 | 18 | N08278 | ks |

Poznámky k objednání

- všechny rozměry uvedeny v mm

Stavěcí kroužek DIN 705

Se stavěcím šroubem



Materiál

- ocel C45
- černěno

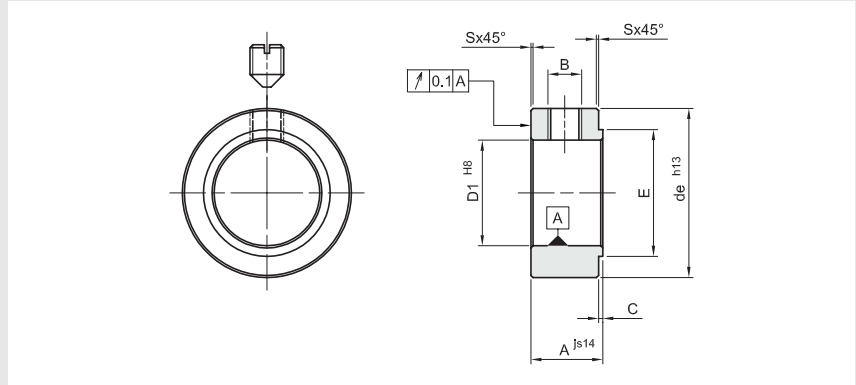
| D1 | de | Typ | A | B | C | Hmotnost [kg / 100 ks] | Obj. kód | Jedn. |
|-----|-----|-----|----|----------|-----|---------------------------|----------|-------|
| 3 | 7 | A | 5 | M2 x 3 | 0,5 | 0,12 | N08330 | ks |
| 4 | 8 | A | 5 | M2,5 x 3 | 0,5 | 0,15 | N08331 | ks |
| 5 | 10 | A | 6 | M3 x 4 | 0,6 | 0,28 | N08332 | ks |
| 6 | 12 | A | 8 | M4 x 5 | 0,8 | 0,54 | N08333 | ks |
| 7 | 12 | A | 8 | M4 x 5 | 0,8 | 0,48 | N08334 | ks |
| 8 | 16 | A | 8 | M4 x 6 | 0,8 | 0,94 | N08335 | ks |
| 9 | 18 | A | 10 | M5 x 8 | 1,0 | 1,51 | N08336 | ks |
| 10 | 20 | A | 10 | M5 x 8 | 1,0 | 1,85 | N08337 | ks |
| 12 | 22 | A | 12 | M6 x 8 | 1,2 | 2,52 | N08338 | ks |
| 14 | 25 | A | 12 | M6 x 8 | 1,2 | 3,17 | N08339 | ks |
| 15 | 25 | A | 12 | M6 x 8 | 1,2 | 2,98 | N08340 | ks |
| 16 | 28 | A | 12 | M6 x 8 | 1,2 | 3,84 | N08341 | ks |
| 17 | 28 | A | 12 | M6 x 8 | 1,2 | 4,00 | N08342 | ks |
| 18 | 32 | A | 14 | M6 x 8 | 1,4 | 6,00 | N08343 | ks |
| 20 | 32 | A | 14 | M6 x 8 | 1,4 | 5,30 | N08344 | ks |
| 22 | 36 | A | 14 | M6 x 10 | 1,4 | 6,90 | N08345 | ks |
| 25 | 40 | A | 16 | M8 x 10 | 1,6 | 9,56 | N08346 | ks |
| 30 | 45 | A | 16 | M8 x 10 | 1,6 | 11,10 | N08347 | ks |
| 35 | 56 | A | 16 | M8 x 12 | 1,6 | 18,70 | N08348 | ks |
| 40 | 63 | A | 18 | M10 x 16 | 1,8 | 26,10 | N08349 | ks |
| 45 | 70 | A | 18 | M10 x 16 | 1,8 | 31,70 | N08350 | ks |
| 50 | 80 | A | 18 | M10 x 16 | 1,8 | 42,90 | N08351 | ks |
| 55 | 80 | A | 18 | M10 x 16 | 1,8 | 37,30 | N08352 | ks |
| 60 | 90 | A | 20 | M10 x 16 | 2,0 | 55,20 | N08353 | ks |
| 65 | 100 | A | 20 | M10 x 20 | 2,0 | 70,80 | N08354 | ks |
| 70 | 100 | A | 20 | M10 x 20 | 2,0 | 62,60 | N08355 | ks |
| 80 | 110 | B | 22 | M12 x 20 | 2,2 | 76,80 | N08356 | ks |
| 90 | 125 | B | 22 | M12 x 20 | 2,2 | 101,00 | N08357 | ks |
| 100 | 140 | B | 25 | M12 x 25 | 2,5 | 147,00 | N08358 | ks |

Poznámky k objednávce

- všechny rozměry uvedeny v mm

Stavěcí kroužek

S límcem



Materiál

- ocel C45
- černěno

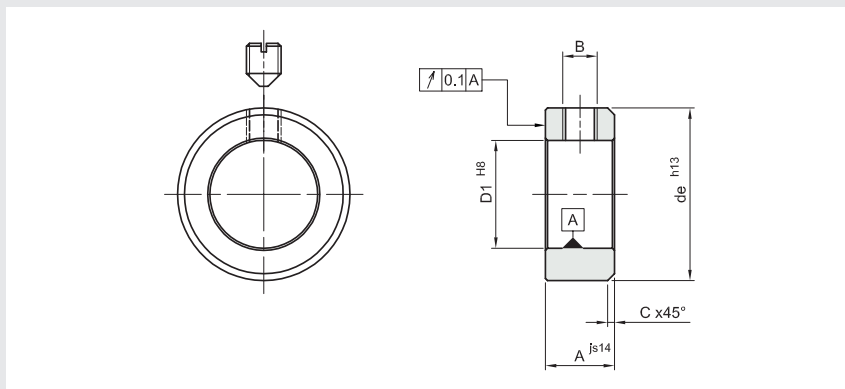
| D1 | de | A | B | C | E | S | Hmotnost [kg / 100 ks] | Obj. kód | Jedn. |
|----|----|----|----------|-----|----|-----|---------------------------|----------|-------|
| 6 | 12 | 8 | M4 x 5 | 0,6 | 8 | 0,3 | 0,54 | N08359 | ks |
| 8 | 16 | 8 | M4 x 6 | 0,8 | 10 | 0,3 | 0,94 | N08360 | ks |
| 10 | 20 | 10 | M5 x 8 | 0,8 | 13 | 0,3 | 1,85 | N08361 | ks |
| 12 | 22 | 12 | M6 x 8 | 0,8 | 15 | 0,5 | 2,52 | N08362 | ks |
| 15 | 25 | 12 | M6 x 8 | 1,0 | 18 | 0,6 | 2,98 | N08363 | ks |
| 17 | 28 | 12 | M6 x 8 | 1,0 | 20 | 0,6 | 4,00 | N08364 | ks |
| 20 | 32 | 14 | M6 x 8 | 1,0 | 24 | 0,8 | 5,30 | N08365 | ks |
| 25 | 40 | 16 | M8 x 10 | 1,0 | 29 | 0,8 | 9,56 | N08366 | ks |
| 30 | 45 | 16 | M8 x 10 | 1,2 | 34 | 1,0 | 11,10 | N08367 | ks |
| 35 | 56 | 16 | M8 x 12 | 1,2 | 39 | 1,0 | 18,70 | N08368 | ks |
| 40 | 63 | 18 | M10 x 16 | 1,2 | 44 | 1,0 | 26,10 | N08369 | ks |

Poznámky k objednávce

- všechny rozměry uvedeny v mm

Stavěcí kroužek nerezový

Se stavěcím šroubem



Materiál

- nerezová ocel

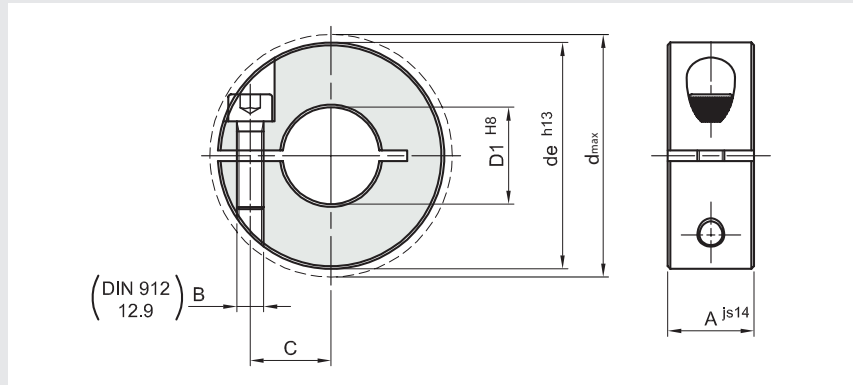
| D1 | de | A | B | C | Hmotnosť [kg / 100 ks] | Obj. kód | Jedn. |
|----|----|----|----------|-----|---------------------------|----------|-------|
| 4 | 8 | 5 | M2,5 x 3 | 0,5 | 0,15 | N08432 | ks |
| 5 | 10 | 6 | M3 x 4 | 0,6 | 0,28 | N08433 | ks |
| 6 | 12 | 8 | M4 x 5 | 0,8 | 0,54 | N08434 | ks |
| 7 | 12 | 8 | M4 x 5 | 0,8 | 0,48 | N08435 | ks |
| 8 | 16 | 8 | M4 x 6 | 0,8 | 0,94 | N08436 | ks |
| 9 | 18 | 10 | M5 x 8 | 1,0 | 1,51 | N08437 | ks |
| 10 | 20 | 10 | M5 x 8 | 1,0 | 1,85 | N08438 | ks |
| 12 | 22 | 12 | M6 x 8 | 1,2 | 2,52 | N08439 | ks |
| 14 | 25 | 12 | M6 x 8 | 1,2 | 3,17 | N08440 | ks |
| 15 | 25 | 12 | M6 x 8 | 1,2 | 2,98 | N08441 | ks |
| 16 | 28 | 12 | M6 x 8 | 1,2 | 3,84 | N08442 | ks |
| 17 | 28 | 12 | M6 x 8 | 1,2 | 4,00 | N08443 | ks |
| 18 | 32 | 14 | M6 x 8 | 1,4 | 6,00 | N08444 | ks |
| 20 | 32 | 14 | M6 x 8 | 1,4 | 5,30 | N08445 | ks |
| 22 | 36 | 14 | M6 x 10 | 1,4 | 6,90 | N08446 | ks |
| 25 | 40 | 16 | M8 x 10 | 1,6 | 9,56 | N08447 | ks |
| 30 | 45 | 16 | M8 x 10 | 1,6 | 11,10 | N08448 | ks |
| 35 | 56 | 16 | M8 x 12 | 1,6 | 18,70 | N08449 | ks |
| 40 | 63 | 18 | M10 x 16 | 1,8 | 26,10 | N08450 | ks |
| 45 | 70 | 18 | M10 x 16 | 1,8 | 31,70 | N08451 | ks |
| 50 | 80 | 18 | M10 x 16 | 1,8 | 42,90 | N08452 | ks |

Poznámky k objednávaniu

- všetky rozmery uvedeny v mm

Svěrný kroužek

S jedním šroubem



Materiál

- ocel C45
- černěno

| D1 | de | d _{max} | A | B | C | Hmotnost [kg / 100 ks] | Obj. kód | Jedn. |
|----|-----|------------------|----|---------|------|---------------------------|----------|-------|
| 4 | 16 | 20,7 | 9 | M3 x 8 | 5,5 | 0,01 | N08370 | ks |
| 5 | 16 | 20,7 | 9 | M3 x 8 | 5,5 | 0,01 | N08371 | ks |
| 6 | 16 | 20,7 | 9 | M3 x 8 | 5,5 | 0,01 | N08372 | ks |
| 8 | 18 | 22,4 | 9 | M3 x 8 | 6,5 | 0,01 | N08373 | ks |
| 10 | 24 | 26,0 | 9 | M3 x 8 | 8,5 | 0,02 | N08374 | ks |
| 12 | 28 | 31,8 | 11 | M4 x 12 | 10,0 | 0,04 | N08375 | ks |
| 14 | 30 | 33,9 | 11 | M4 x 12 | 11,0 | 0,04 | N08376 | ks |
| 15 | 34 | 39,4 | 13 | M5 x 14 | 12,5 | 0,07 | N08377 | ks |
| 16 | 34 | 39,4 | 13 | M5 x 14 | 12,5 | 0,06 | N08378 | ks |
| 18 | 36 | 41,2 | 13 | M5 x 14 | 13,5 | 0,07 | N08379 | ks |
| 19 | 40 | 46,4 | 15 | M6 x 16 | 14,7 | 0,10 | N08380 | ks |
| 20 | 40 | 46,4 | 15 | M6 x 16 | 14,7 | 0,10 | N08381 | ks |
| 22 | 42 | 48,1 | 15 | M6 x 16 | 16,0 | 0,10 | N08382 | ks |
| 23 | 45 | 50,8 | 15 | M6 x 16 | 17,5 | 0,12 | N08383 | ks |
| 24 | 45 | 50,8 | 15 | M6 x 16 | 17,5 | 0,12 | N08384 | ks |
| 25 | 45 | 50,8 | 15 | M6 x 16 | 17,5 | 0,11 | N08385 | ks |
| 26 | 48 | 53,7 | 15 | M6 x 18 | 19,0 | 0,13 | N08386 | ks |
| 28 | 48 | 53,7 | 15 | M6 x 18 | 19,0 | 0,12 | N08387 | ks |
| 30 | 54 | 58,6 | 15 | M6 x 18 | 21,5 | 0,16 | N08388 | ks |
| 32 | 54 | 58,6 | 15 | M6 x 18 | 21,5 | 0,16 | N08389 | ks |
| 35 | 57 | 61,6 | 15 | M6 x 18 | 23,2 | 0,17 | N08390 | ks |
| 36 | 57 | 61,6 | 15 | M6 x 18 | 23,2 | 0,16 | N08391 | ks |
| 38 | 60 | 65,0 | 15 | M6 x 18 | 25,0 | 0,18 | N08392 | ks |
| 40 | 60 | 65,0 | 15 | M6 x 18 | 25,0 | 0,16 | N08393 | ks |
| 45 | 73 | 79,4 | 19 | M8 x 25 | 29,5 | 0,34 | N08394 | ks |
| 48 | 78 | 84,2 | 19 | M8 x 25 | 32,0 | 0,39 | N08395 | ks |
| 50 | 78 | 84,2 | 19 | M8 x 25 | 32,0 | 0,37 | N08396 | ks |
| 55 | 82 | 88,8 | 19 | M8 x 25 | 34,2 | 0,38 | N08397 | ks |
| 60 | 88 | 94,0 | 19 | M8 x 25 | 37,0 | 0,43 | N08398 | ks |
| 70 | 98 | 104,5 | 19 | M8 x 25 | 42,0 | 0,48 | N08399 | ks |
| 80 | 108 | 113,8 | 19 | M8 x 25 | 47,0 | 0,54 | N08400 | ks |

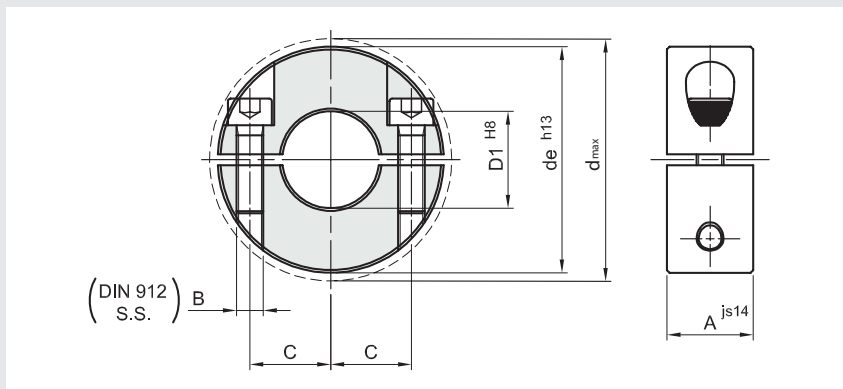
Poznámky k objednávce

- všechny rozměry uvedeny v mm

Svěrné kroužky

Svěrný kroužek

Se dvěma šrouby



Materiál

- ocel C45
- černěno

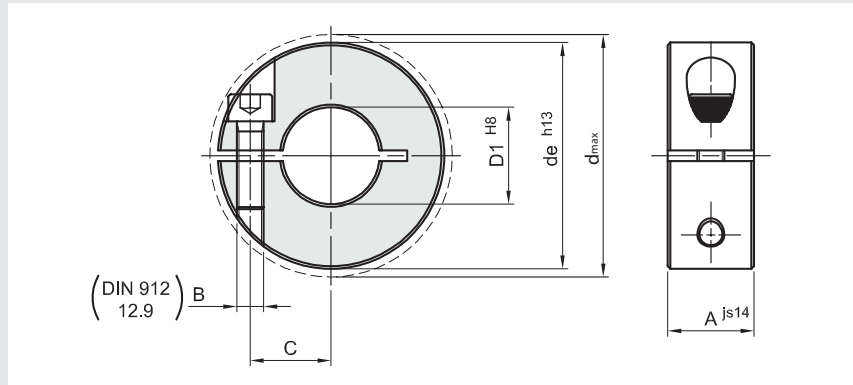
| D1 | de | d _{max} | A | B | C | Hmotnost [kg / 100 ks] | Obj. kód | Jedn. |
|----|-----|------------------|----|---------|------|---------------------------|----------|-------|
| 4 | 16 | 20,7 | 9 | M3 x 8 | 5,5 | 0,01 | N08401 | ks |
| 5 | 16 | 20,7 | 9 | M3 x 8 | 5,5 | 0,01 | N08402 | ks |
| 6 | 16 | 20,7 | 9 | M3 x 8 | 5,5 | 0,01 | N08403 | ks |
| 8 | 18 | 22,4 | 9 | M3 x 8 | 6,5 | 0,01 | N08404 | ks |
| 10 | 24 | 26,0 | 9 | M3 x 8 | 8,5 | 0,02 | N08405 | ks |
| 12 | 28 | 31,8 | 11 | M4 x 12 | 10,0 | 0,04 | N08406 | ks |
| 14 | 30 | 33,9 | 11 | M4 x 12 | 11,0 | 0,04 | N08407 | ks |
| 15 | 34 | 39,4 | 13 | M5 x 14 | 12,5 | 0,07 | N08408 | ks |
| 16 | 34 | 39,4 | 13 | M5 x 14 | 12,5 | 0,07 | N08409 | ks |
| 18 | 36 | 41,2 | 13 | M5 x 14 | 13,5 | 0,07 | N08410 | ks |
| 19 | 40 | 46,4 | 15 | M6 x 16 | 14,7 | 0,10 | N08411 | ks |
| 20 | 40 | 46,4 | 15 | M6 x 16 | 14,7 | 0,10 | N08412 | ks |
| 22 | 42 | 48,1 | 15 | M6 x 16 | 16,0 | 0,11 | N08413 | ks |
| 23 | 45 | 50,8 | 15 | M6 x 16 | 17,5 | 0,13 | N08414 | ks |
| 24 | 45 | 50,8 | 15 | M6 x 16 | 17,5 | 0,12 | N08415 | ks |
| 25 | 45 | 50,8 | 15 | M6 x 16 | 17,5 | 0,12 | N08416 | ks |
| 26 | 48 | 53,7 | 15 | M6 x 18 | 19,0 | 0,14 | N08417 | ks |
| 28 | 48 | 53,7 | 15 | M6 x 18 | 19,0 | 0,13 | N08418 | ks |
| 30 | 54 | 58,6 | 15 | M6 x 18 | 21,5 | 0,17 | N08419 | ks |
| 32 | 54 | 58,6 | 15 | M6 x 18 | 21,5 | 0,16 | N08420 | ks |
| 35 | 57 | 61,6 | 15 | M6 x 18 | 23,2 | 0,17 | N08421 | ks |
| 36 | 57 | 61,6 | 15 | M6 x 18 | 23,2 | 0,17 | N08422 | ks |
| 38 | 60 | 65,0 | 15 | M6 x 18 | 25,0 | 0,18 | N08423 | ks |
| 40 | 60 | 65,0 | 15 | M6 x 18 | 25,0 | 0,17 | N08424 | ks |
| 45 | 73 | 79,4 | 19 | M8 x 25 | 29,5 | 0,36 | N08425 | ks |
| 48 | 78 | 84,2 | 19 | M8 x 25 | 32,0 | 0,41 | N08426 | ks |
| 50 | 78 | 84,2 | 19 | M8 x 25 | 32,0 | 0,39 | N08427 | ks |
| 55 | 82 | 88,8 | 19 | M8 x 25 | 34,2 | 0,40 | N08428 | ks |
| 60 | 88 | 94,0 | 19 | M8 x 25 | 37,0 | 0,44 | N08429 | ks |
| 70 | 98 | 104,5 | 19 | M8 x 25 | 42,0 | 0,50 | N08430 | ks |
| 80 | 108 | 113,8 | 19 | M8 x 25 | 47,0 | 0,55 | N08431 | ks |

Poznámky k objednávce

- všechny rozměry uvedeny v mm

Svěrný kroužek nerezový

S jedním šroubem



Materiál

- nerezová ocel

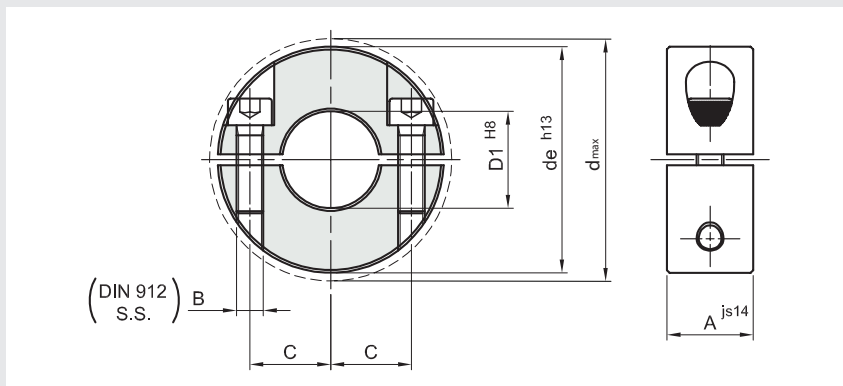
| D1 | de | d _{max} | A | B | C | Hmotnost [kg / 100ks] | Obj. kód | Jedn. |
|----|----|------------------|----|---------|------|--------------------------|----------|-------|
| 4 | 16 | 20,7 | 9 | M3 x 8 | 5,5 | 0,01 | N08453 | ks |
| 5 | 16 | 20,7 | 9 | M3 x 8 | 5,5 | 0,01 | N08454 | ks |
| 6 | 16 | 20,7 | 9 | M3 x 8 | 5,5 | 0,01 | N08455 | ks |
| 8 | 18 | 22,4 | 9 | M3 x 8 | 6,5 | 0,01 | N08456 | ks |
| 10 | 24 | 26,0 | 9 | M3 x 8 | 8,5 | 0,02 | N08457 | ks |
| 12 | 28 | 31,8 | 11 | M4 x 12 | 10,0 | 0,04 | N08458 | ks |
| 14 | 30 | 33,9 | 11 | M4 x 12 | 11,0 | 0,04 | N08459 | ks |
| 15 | 34 | 39,4 | 13 | M5 x 14 | 12,5 | 0,07 | N08460 | ks |
| 16 | 34 | 39,4 | 13 | M5 x 14 | 12,5 | 0,06 | N08461 | ks |
| 18 | 36 | 41,2 | 13 | M5 x 14 | 13,5 | 0,07 | N08462 | ks |
| 19 | 40 | 46,4 | 15 | M6 x 16 | 14,7 | 0,10 | N08463 | ks |
| 20 | 40 | 46,4 | 15 | M6 x 16 | 14,7 | 0,10 | N08464 | ks |
| 22 | 42 | 48,1 | 15 | M6 x 16 | 16,0 | 0,10 | N08465 | ks |
| 23 | 45 | 50,8 | 15 | M6 x 16 | 17,5 | 0,12 | N08466 | ks |
| 24 | 45 | 50,8 | 15 | M6 x 16 | 17,5 | 0,12 | N08467 | ks |
| 25 | 45 | 50,8 | 15 | M6 x 16 | 17,5 | 0,11 | N08468 | ks |
| 26 | 48 | 53,7 | 15 | M6 x 18 | 19,0 | 0,13 | N08469 | ks |
| 28 | 48 | 53,7 | 15 | M6 x 18 | 19,0 | 0,12 | N08470 | ks |
| 30 | 54 | 58,6 | 15 | M6 x 18 | 21,5 | 0,16 | N08471 | ks |
| 32 | 54 | 58,6 | 15 | M6 x 18 | 21,5 | 0,16 | N08472 | ks |
| 35 | 57 | 61,6 | 15 | M6 x 18 | 23,2 | 0,17 | N08473 | ks |
| 36 | 57 | 61,6 | 15 | M6 x 18 | 23,2 | 0,16 | N08474 | ks |
| 38 | 60 | 65,0 | 15 | M6 x 18 | 25,0 | 0,18 | N08475 | ks |
| 40 | 60 | 65,0 | 15 | M6 x 18 | 25,0 | 0,16 | N08476 | ks |
| 45 | 73 | 79,4 | 19 | M8 x 25 | 29,5 | 0,34 | N08477 | ks |
| 48 | 78 | 84,2 | 19 | M8 x 25 | 32,0 | 0,39 | N08478 | ks |
| 50 | 78 | 84,2 | 19 | M8 x 25 | 32,0 | 0,37 | N08479 | ks |

Poznámky k objednávce

- všechny rozměry uvedeny v mm

Svěrný kroužek nerezový

Se dvěma šrouby



Materiál

- nerezová ocel

| D1 | de | d _{max} | A | B | C | Hmotnost [kg / 100ks] | Obj. kód | Jedn. |
|----|----|------------------|----|---------|------|--------------------------|----------|-------|
| 4 | 16 | 20,7 | 9 | M3 x 8 | 5,5 | 0,01 | N08480 | ks |
| 5 | 16 | 20,7 | 9 | M3 x 8 | 5,5 | 0,01 | N08481 | ks |
| 6 | 16 | 20,7 | 9 | M3 x 8 | 5,5 | 0,01 | N08482 | ks |
| 8 | 18 | 22,4 | 9 | M3 x 8 | 6,5 | 0,01 | N08483 | ks |
| 10 | 24 | 26,0 | 9 | M3 x 8 | 8,5 | 0,02 | N08484 | ks |
| 12 | 28 | 31,8 | 11 | M4 x 12 | 10,0 | 0,04 | N08485 | ks |
| 14 | 30 | 33,9 | 11 | M4 x 12 | 11,0 | 0,04 | N08486 | ks |
| 15 | 34 | 39,4 | 13 | M5 x 14 | 12,5 | 0,07 | N08487 | ks |
| 16 | 34 | 39,4 | 13 | M5 x 14 | 12,5 | 0,07 | N08488 | ks |
| 18 | 36 | 41,2 | 13 | M5 x 14 | 13,5 | 0,07 | N08489 | ks |
| 19 | 40 | 46,4 | 15 | M6 x 16 | 14,7 | 0,10 | N08490 | ks |
| 20 | 40 | 46,4 | 15 | M6 x 16 | 14,7 | 0,10 | N08491 | ks |
| 22 | 42 | 48,1 | 15 | M6 x 16 | 16,0 | 0,11 | N08492 | ks |
| 23 | 45 | 50,8 | 15 | M6 x 16 | 17,5 | 0,13 | N08493 | ks |
| 24 | 45 | 50,8 | 15 | M6 x 16 | 17,5 | 0,12 | N08494 | ks |
| 25 | 45 | 50,8 | 15 | M6 x 16 | 17,5 | 0,12 | N08495 | ks |
| 26 | 48 | 53,7 | 15 | M6 x 18 | 19,0 | 0,14 | N08496 | ks |
| 28 | 48 | 53,7 | 15 | M6 x 18 | 19,0 | 0,13 | N08497 | ks |
| 30 | 54 | 58,6 | 15 | M6 x 18 | 21,5 | 0,17 | N08498 | ks |
| 32 | 54 | 58,6 | 15 | M6 x 18 | 21,5 | 0,16 | N08499 | ks |
| 35 | 57 | 61,6 | 15 | M6 x 18 | 23,2 | 0,17 | N08500 | ks |
| 36 | 57 | 61,6 | 15 | M6 x 18 | 23,2 | 0,17 | N08501 | ks |
| 38 | 60 | 65,0 | 15 | M6 x 18 | 25,0 | 0,18 | N08502 | ks |
| 40 | 60 | 65,0 | 15 | M6 x 18 | 25,0 | 0,17 | N08503 | ks |
| 45 | 73 | 79,4 | 19 | M8 x 25 | 29,5 | 0,36 | N08504 | ks |
| 48 | 78 | 84,2 | 19 | M8 x 25 | 32,0 | 0,41 | N08505 | ks |
| 50 | 78 | 84,2 | 19 | M8 x 25 | 32,0 | 0,39 | N08506 | ks |

Poznámky k objednávce

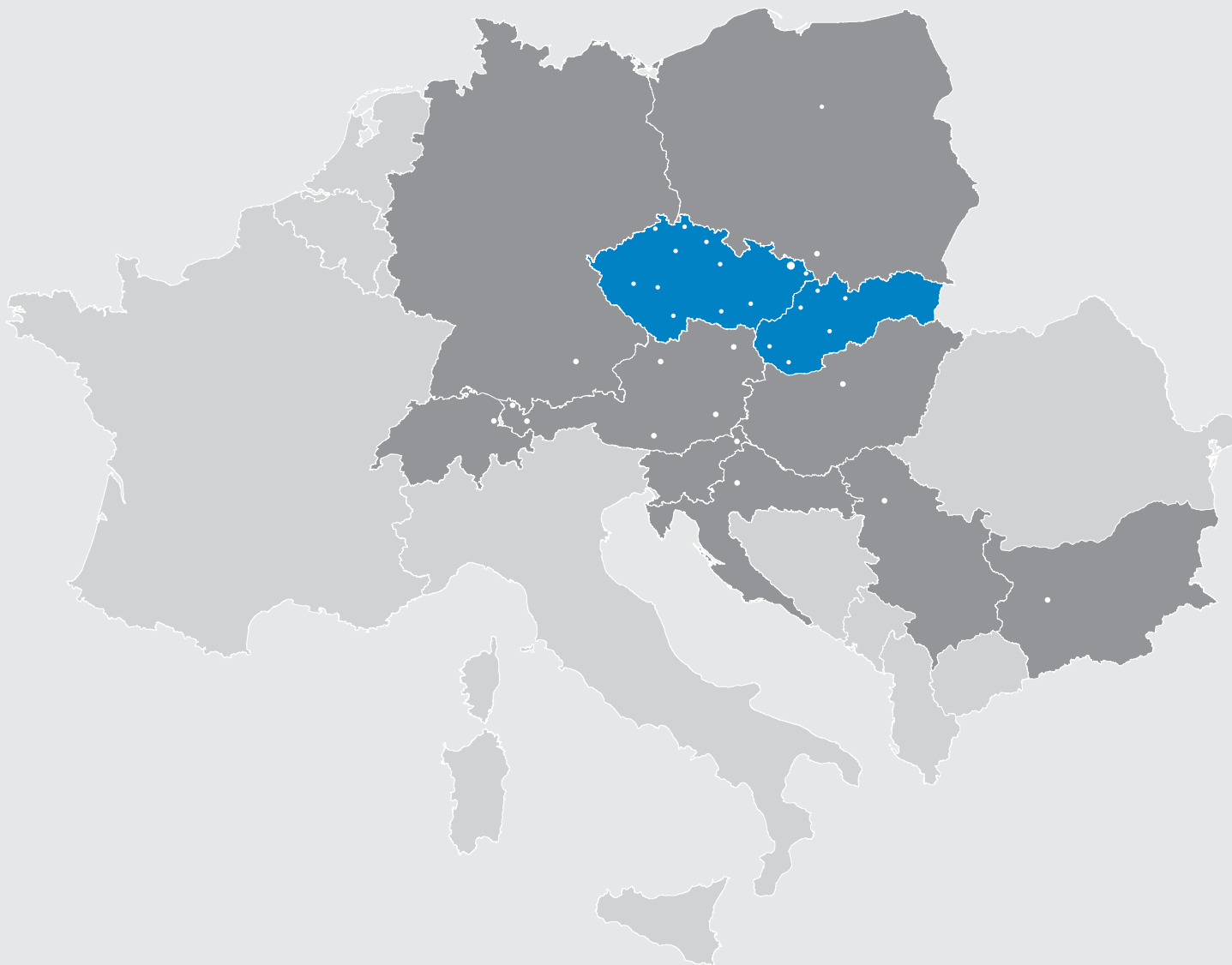
- všechny rozměry uvedeny v mm

Haberkorn Ulmer s.r.o.,

člen mezinárodní skupiny Haberkorn, působí na českém trhu od roku 1994. V oboru dodávek konstrukčních celků, strojních prvků pro průmyslové podniky, ochranných pracovních prostředků a hydraulických komponentů si za tuto dobu dokázal získat již značnou část českého a slovenského průmyslového trhu. Rozšiřováním nabízeného sortimentu se společnost snaží o zkvalitnění své nabídky a posílení spolupráce směrem ke všem zákazníkům.

Filozofií společnosti je orientace na zákazníka a jeho potřeby. Tým inženýrů a obchodníků je zaměřen na budování dlouhodobého partnerství se zákazníky. V rámci takové spolupráce přináší svým klientům jak standardní řešení, tak specifická vycházející z potřeb zákazníků, a to nejen v oblasti technické podpory, ale i logistiky, dodávek a vývoje speciálních komponentů apod.

To vše předurčuje Haberkorn Ulmer s.r.o. jako solidního partnera těm, kteří staví svůj rozvoj na inovaci, rychlosti a spolehlivosti.



Skupina Haberkorn působí již v 11 zemích Evropy.

Také v České a Slovenské republice disponuje širokou sítí regionálních zastoupení.

POHONNÉ ELEMENTY

NOVINKY V SORTIMENTU 2016

Haberkorn Ulmer s.r.o.

Generála Vlachého 305
747 62 Mokré Lazce
Česká republika

centrála:

tel.: +420 553 757 111
fax: +420 553 757 101
info@haberkorn.cz
www.haberkorn.cz

divize Strojní elementy:

tel.: +420 553 757 154
fax: +420 553 757 127
stroj.elementy@haberkorn.cz

**bezplatný kontakt
pro Slovensko:**

tel.: 0800 042 204
fax: 0800 042 205
info@haberkorn.sk
www.haberkorn.sk

Česká republika
Slovenská republika
Rakousko
Polsko
Německo
Švýcarsko
Slovinsko
Chorvatsko
Maďarsko
Bulharsko
Srbsko

www.haberkorn.cz

HABERKORN